



Newsletter

21/11/2025 Autumn Issue 5

#shineatpriorweston Virtual tour @ <https://bit.ly/32RoLWi> #unitedagainstbullying

We aim high * We are resilient * We are curious learners * We value diversity * We are respectful



Dear Prior Weston families,

We've had a lovely week in school and I want to start with a big shout-out to everyone who supported the Book Fair – our first in many years! A huge thank you to **Toni**, one of our parents, who gave up so much of her time to make it all happen – we genuinely couldn't have done it without her. Thanks to the whole community, we've raised **£173 worth of books** for the school, which is brilliant.

We're also planning a **PTA coffee morning** for any parents who might like to get involved, share ideas, or just find out what the PTA does. It'll be friendly and informal, so please come along next Friday morning if you're curious.

We know winter can be tough, so we've put a rail of **spare winter coats and jackets** in the foyer for families to help themselves to. Please take whatever you need – they're there to support our community and make sure everyone stays warm over the colder months.

Finally, a quick reminder about attendance. Now that we're well into the term, keeping up regular, good attendance really makes a huge difference to children's learning and confidence. Thank you to everyone who helps get their children in every day – it really does matter.

Wishing you a safe, happy and cosy weekend.

Fiona 😊
Head Teacher



Dates for your Diary

November 2025	
Friday 28th November	PTA Coffee Morning 9am
Friday 28th November	Whitecross Festive Event in Whitecross Street 4-6pm including Year 4 Poetry at 4pm
December 2025	
Tuesday 2nd December	Years 2, 3 and 4 trip to the Cinderella Pantomime at The Hackney Empire 1pm
Tuesday 9th December	Music Masters Winter Concert @ Plaisterers' Hall Years 1, 2, 3, 4, 5 & 6
Wednesday 10th December	Whitecross Street cake & bake sale Donations needed
Thursday 11th December	Years 5 and 6 trip to the Cinderella Pantomime at The Hackney Empire 1pm
Friday 12th December	Christmas Jumper Day
Friday 12th December	Christmas Lunch
Monday 15th December	AM Cinderella Pantomime in the Hall Early Years—Year 1
Wednesday 17th December	Festive Performance including children from Nursery - Year 6 at 1:45pm
Thursday 18th December	Festive Performance including children from Nursery - Year 6 at 9:45am PM—Class Parties
Friday 19th December	End of school Term 2pm finish





Free toothbrushes!



We all know how important oral health is and to celebrate and support this, there is now a box in the entrance where you can find free toothpaste for your children.

Please help yourself to one toothpaste for each child so there is enough for everyone.

These were donated to the school for our families to encourage a healthy oral health care routine in children as early as possible.

Prior Weston book table



Do not forget that we have our wonderful book table in the entrance for all families. If you have appropriate children's books to donate, please bring them to the reception desk and we will ensure that they get displayed on the table for people to take.

If you see a book that you or your child likes, please help yourself and enjoy your story time. Thank you to all the wonderful families that have already donated books for other families to share and enjoy!



Bikes and Scooters Security



Please remember to secure any bikes or scooters left in the bike parking area with a chain or padlock. We do not want anything going missing.

Anything left in this area is done so at the owners own risk. School cannot be responsible for any losses or damages to property left in this area or within the school.

Please do not leave any bikes or scooters in the bike park at weekends or over the holidays as this area is unsecure and encourages intruders on to the site.



Towel & Umbrella Donations



Babies and Toddlers rooms in The Children's Centre are in desperate need of some big, clean towels for their water play areas and still need umbrellas.

If you have any you can spare, please drop the off to the Reception desk. They will be very gratefully received!



Spare Winter Coats



Inside the foyer of the Fortune Park entrance, there is a cupboard where families can donate or take jackets and coats for their children or for themselves. There are also spare gloves, hats, scarves and shoes.

As the days are starting to get colder, please have a look and see if there are any jackets or coats that will fit your child or you before you head off to the expensive shops to buy them.



Every Day Counts: The Importance of Good Attendance



This year the attendance team will be Touvonna and Bev working with Fiona to improve our whole school attendance and punctuality.

At Prior Weston we know that regular attendance makes a huge difference to your child's learning, confidence, and happiness at school.

Every day counts, and every lesson missed is a chance lost to build on skills, make progress, and join in with their classmates.

Children who attend school regularly are far more likely to achieve their best, both academically and socially. For example:

- Missing just one day every two weeks adds up to nearly 20 days across the school year – that's almost a full month of learning lost.
- Attendance that drops to 90% (just one day off every fortnight) means a child misses the equivalent of half a year of school by the time they leave primary.
- National studies show that children with attendance above 95% achieve better in reading, writing, and maths, and are more confident learners.

Good attendance also helps children develop routines, build strong friendships, and take full advantage of the exciting opportunities our school provides.

Last year our average attendance for the school was **88.9%**. The national average was **95.5%**. As a result we are now a focus school for the local authority who will be monitoring our attendance.

We have set a whole school target for the end of the year for our school average to be 93% (above would be even better!)

Of course, we understand that children are sometimes unwell and need to stay at home. But keeping absences to a minimum makes a huge difference to their progress. If you're ever unsure whether your child is well enough for school, please get in touch—we're here to help.

Together, let's make every day count and give our children the very best start in life!

What sort of start is your child getting?

Just a little bit late doesn't seem much but.....

Just a little bit late doesn't seem much but.....

He/She is only missing just....	That equals....	Which is.....
10 minutes per day	50 minutes per week	Nearly 1.5 weeks per year
20 minutes per day	1 hour 40 mins per week	Over 2.5 Weeks per year
Half an hour per day	Half a day per week	4 Weeks per year
1 hour per day	1 day per week	8 Weeks per year

Does your child have a chance of being successful?

1 or 2 days a week doesn't seem much but.....

If your child misses....	That equals....	Which is....
1 day per fortnight	20 Days per year	4 weeks per year
1 day per week	40 Days	8 weeks
2 days per week	80 Days	16 weeks per year
3 days per week	120 Days per year	24 weeks per year

Should I keep my child off school?

Yes

Until...

Chickenpox	at least 5 days from the onset of the rash and until all blisters have crusted over
Diarrhoea and Vomiting	48 hours after their last episode
Cold and Flu-like illness (including COVID-19)	they no longer have a high temperature and feel well enough to attend. Follow the national guidance if they've tested positive for COVID-19.
Impetigo	their sores have crusted and healed, or 48 hours after they started antibiotics
Measles	4 days after the rash first appeared
Mumps	5 days after the swelling started
Scabies	they've had their first treatment
Scarlet Fever	24 hours after they started taking antibiotics
Whooping Cough	48 hours after they started taking antibiotics

No

but make sure you let their school or nursery know about...

Hand, foot and mouth	Glandular fever
Head lice	Tonsillitis
Threadworms	Slapped cheek



SCAN ME

Advice and guidance

To find out more, search for health protection in schools or scan the QR code or visit <https://qrco.de/minfec>.

School Bags for Sale

Just a reminder that we sell a selection of Prior Weston school bags.
We have Rucksacks, book bags and PE bags all available through Parentmail.

It can help with that morning mayhem that we all face to have different bags already packed and ready to go for PE, swimming or forest school day, or just having reading books and homework all in one place and easy to find.

Any bag can be used for school, however, with a branded bag there is more chance of having it returned should it be left in the park or on the bus if it has the school name on it.

Please remember that whatever bag your child brings to school should have their name and class on it so it can be reunited as quickly as possible with its owner.

PE bags—£5:00
Rucksacks—£10:00
Book bags—£5:00





Extended Day Programme



Extended Day

Our Extended Day provision is currently compiled of Early Birds breakfast club, Night Owls after school club, Enrichment clubs and Holiday play-schemes.

Opening Times

Monday to Friday (term time only) – excluding bank holidays and school INSET days.

Early Birds Breakfast Club; **8:00am – 8:45am**

Night Owls Afterschool Club; **3:30pm – 6:00pm**

Parentmail

All booking and payments for Early Birds and Night Owls can be made directly through our Parentmail booking form or alternatively you can contact the extended day coordinator directly via email; Extendedday@priorweston.islington.sch.uk.

Please note, we do require at least 2 working days' notice before bookings can be processed.

If you have an emergency situation and you need your child to attend either of our extended day options at short notice, we are very happy to allocate you a space but you will incur an emergency fee. This can also be booked directly via Parentmail or email but please inform a member of staff beforehand. Please be aware that if all of our allocated spaces are taken we may not be able to accept any further short-notice bookings.

Early Birds breakfast club

To start the day off in the right way we offer a fantastic breakfast club! Early birds breakfast is **open from 8am** for children in Reception to Year 6. Your child can get involved with crafts, art, sports or games in addition to eating a healthy breakfast to prepare themselves for the school day at 8:45am. The cut off time for breakfast is **8:35am** and the **last drop offs are at 8:40am** to give the children enough time to prepare for the busy day ahead.

Night Owls after school club

At Prior Weston, Night Owl's is our after school provision for children whose parents are unable to make the usual pick up time.

We have a bustling range of exciting, focused and also less structured activities for the Night Owls to take part in.

We are committed to providing this service not only to help support families but to also enrich our children's day outside of normal school hours.

The sessions run from **3:30pm till 6pm**, with pick up any time before 6pm.

We do provide hot food and snacks at around **4:45**, so pick up just before or just after is recommended





Fortune Street Park Friends



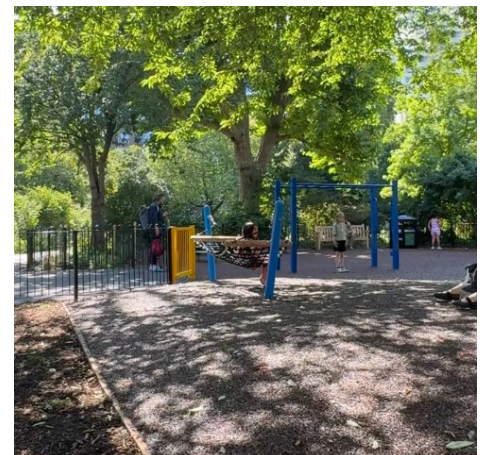
The **Friends of the Park** voluntary group established in 2005 consists of local City and Islington residents, who feel passionately about our local park.

Over the years they have fundraised and organised events in this small popular park. There is an annual community fun day that they organise and fundraise for – well attended by the local community and appreciated by all that come along.

They also care about the maintenance and security of the park, working in partnership with [Islington Greenspaces](#) . They also volunteer to lock the park in the evenings and at weekend safeguarding the park for all of us.

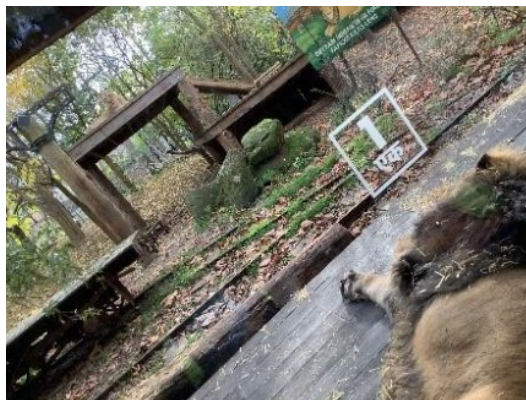
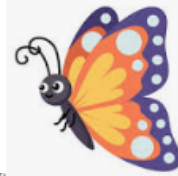
This is just a **friendly reminder** from The Friends of the Park to let everyone know that cycling in the park is **strictly not allowed**. It poses a risk to all park users, and there have been a few near misses involving bikes (both adult and child riders).

Please help us keep everyone safe by dismounting and encouraging your children to do the same before entering the park reminding them of this rule.



Year 2 Trip to London Zoo

Year 2 had an amazing trip to the London Zoo to support our science topic 'Animals and their habitats'. We saw lots of animals including Lions, Tigers, Gorillas, Butterflies, Monkeys, Tiny creatures, Meerkats and Penguins.



Celebration Assembly

24th October 2025

Our shining stars were:

St Pauls - Karim & Samuel

Piccadilly - Adam & Darcey

Kew - Magda & Valentina

Parliament - Isa & Khalid

Tower - Emily & Kento

Westminster - Sol & Joshua

Celebration Assembly

7th November 2025

Our shining stars were:

Barbican - Ezekiel & Louie

St Pauls - Jamal & Julianna

Piccadilly - Isla-Mae & Emily

Kew - Elliott & Nuriyah

Parliament - Amin & Jean-Luc

Tower - Mizzan & Zain

Westminster - Uliana & Zayn

This week's Shining Stars results to be announced today. See next edition.

Weather appropriate clothing

As the days are getting colder and wetter, please send your child in with the appropriate clothing and footwear for the weather each day.

As more children start to bring in hats, scarfs and gloves, please ensure these are labelled by sewing or sticking in a name tag or writing your child's name in them, This will help to identify the owners of any lost items a lot easier and quicker.



Issues in Fortune Park

With the days getting shorter and the weather quickly getting darker and colder, you may well be spending less time outdoors. However, you may still be using the park for as long as you can. As with any issues that might occur externally, please do note whilst we will support where we can, the school does not have the capacity to manage disagreements that may take place in Fortune Park. If you do experience issues, you may wish to contact the parks or community police directly. To report antisocial behaviour, you may find the following link useful:

<https://www.islington.gov.uk/physical-activity-parks-and-trees/parks-and-green-space/managing-parks-and-green-space/tell-us-about-a-problem-in-a-park>



Lovely Letter



24th October 2025

Amirah

Wow! I have been so incredibly impressed with how Amirah has started her Year 6 journey.

She has been giving her very best in all of her lessons, not giving up when faced with a challenge and showing a more independent attitude towards her learning.

Most recently, when we had a local councillor visit, she asked thoughtful and thought-provoking questions which showed how engaged she was.

Amirah has been a joy to get to know so far and I can't wait to see all that she achieves this year.



7th November 2025

Darcey

Darcey is such a joy to have in St. Paul's class and is a joy to teach. I am very proud and privileged to be her teacher.

Since the beginning of year two, Darcey has been amazing, her behaviour is always outstanding and everyone can see how much effort she is putting into her work.

What's even more outstanding is that she is challenging herself across the board and her work is really improving. She always shows kindness, respect and a positive attitude. She is an absolute pleasure to teach.

I am very proud of you Darcey! Well done.



Iced Chocolate with the Head Teacher



26th Brooke: Tower - Since the start of the year Brooke has shown incredible effort towards all of her learning and so much care for her peers whether that is on class or when we were away on the farm trip.

3rd Indiana: Kew - You can always rely on Indiana in any situation. She is hard working and a dedicated student who tries her hardest with all her work. She is also a great friend and caring person. It is great to have Indiana in the class!

17th Luisa: Tower - I have been wowed by Luisa's kindness and effort so far this year. She is an exemplary role model and friend. No matter what the task or job, she is always giving her very best and it is wonderful to see.

24th Jamie: Piccadilly - The Year 3 team all agree that you deserve this nomination. You try your best with all your work. You are good at following instructions and do not allow yourself to get distracted by others. You are always ready to learn and have amazing manners. Well done Jamie.

7th Nov Elias: St Pauls - Since the beginning of year 2 you have shown how ready, respectful and safe you are. You are always so resilient in your learning and always try your best by using all the resources around you to help you. We are all very proud of how you have started year 2, keep this up! Well done

barbican

Family Film Club

Family Film Club, takes place every Saturday morning and turns our 2 & 3 Cinema & cafe into a space where children and their families can experience the wonders of film together.

Designed especially for children, Family Film Club offers curated screenings of international animations, timeless classics, and new releases. There are also free activities, events and live intros as part of the programme. It's a relaxed, welcoming environment that nurtures curiosity through film and connection!

We'd love to invite the families in the Prior Weston community to be part of this weekly celebration of creativity.

Explore upcoming screenings and read more about us here:

barbican.org.uk/whats-on/series/family-film-club

For families with little ones under 12 month olds, we also host our very popular Parent and Baby Screenings on a Saturday and Monday morning, so parents and carers can enjoy the best new films with their little ones, in a relaxed environment, without worrying about making too much noise.

We look forward to welcoming you all!

CINEMA
Family Film Week: Hola Frida!
Sat 25 Oct 2025, 11:00
A gorgeous animated story of feminist icon and inspiring artist, **Frida Kahlo's** childhood in Coyoacan, Mexico.

[→ More info](#)

CINEMA
Family Film Week: Animated Adventure Shorts + Music
Tue 28 Oct 2025, 10:30
Get your groove on in our cinema with a fun music play session and a specially curated toddler-friendly selection of short films.

[→ More info](#)

CINEMA
Family Film Week: Son of Godzilla + activity
Sat 25 Oct 2025, 13:00
A fantastic opportunity to introduce young cinephiles to this Kaiju classic where Godzilla become a father at a time of great danger.

[→ More info](#)

CINEMA
Family Film Week: Kpop Demon Hunters
Tue 28 Oct - Sat 1 Nov 2025
If you've not experienced the phenomenon that is KPDH, or even if you've viewed it 100 times already - now is your chance to live it out on the big screen!

[→ More info](#)

CINEMA
Family Film Week: Animal Friends Shorts Programme
Sun 26 Oct 2025, 11:30
Get creative and make mini animal habitats with [Small World Cinema](#) before watching our specially chosen programme of three brand new animations with stories of animals and their unlikely friendships.

[→ More info](#)

CINEMA
Family Film Week: Zog + Barbican Library Rhyme Time
Wed 29 Oct 2025, 10:30
Join us for a screening of the wonderful adaptation of **Julia Donaldson's** Zog adaptation and an in-cinema Rhyme Time led by the Barbican Library.

[→ More info](#)

CINEMA
Family Film Week: The Legend of Ochi
Mon 27 Oct 2025, 13:45
A dazzling fantasy adventure set in a remote village that charts a young girl's encounter with the mysterious animal, the Ochi.

[→ More info](#)

CINEMA
Family Film Week: The Secret of Kells + Éiru
Wed 29 Oct 2025, 14:00
A double bill of beautiful animations, full of magic and ancient Irish mythology.

[→ More info](#)

The Big Draw Festival 2025: Drawn Together

This year, we celebrate 25 years with the theme 'Drawn Together', highlighting how creativity unites us and how collaboration and connection are at the heart of making.

#TheBigDraw #BDF2025 #DrawnTogether

[Sign up →](#)



Follow the link to see a wide range of community activities for The Big Draw!
<https://www.thebigdraw.org/events?coordinates=51.522001%2C-0.092649>



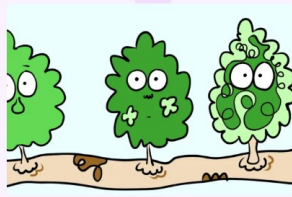
Take a Line for a Walk with Marion Deuchars
 • Young V&A, London
 • 18 Oct 2025, 13:30 - 15:30
 • Free
 • 0 - 16



The Big Draw: Relaxed Family Morning at the Wallace Collection
 • The Wallace Collection, London
 • 25 Oct 2025, 09:00 - 11:00
 • Free
 • 0 - 18+



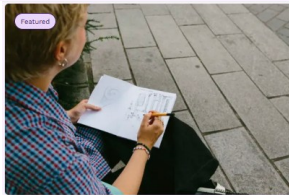
The Big Draw at the Wallace Collection
 • The Wallace Collection, London
 • 25 Oct 2025, 11:00 - 16:00
 • Free
 • 0 - 18+



The Big Draw 2025: Drawn Together
 • Bingham Library, Bingham
 • 21 Oct 2025, 10:00 - 12:00
 • Free
 • 6 - 18+, Seniors



Our Village - Drawn Together
 • Space to Dream Gallery, London
 • 26 Oct 2025, 12:00 - 18:00
 • Free
 • All ages



Architectural Sketchcrawl: Exploring the Past, Present and Future of London's Built Environment
 • NLA - The London Centre, London
 • 25 Oct 2025, 13:00 - 16:00
 • Free, booking required
 • 6 - 18+, Seniors



Skyline sketching in Bankside
 • Better Bankside, London
 • 28 Oct 2025, 12:30 - 14:00
 • Free, booking required
 • All ages



Family friendly "drop-in doodle" at Borough Market
 • The Market Hall, London
 • 29 Oct 2025, 13:00 - 15:00
 • Free, booking required
 • All ages



Family friendly snowland colouring experience
 • Arch 23, London
 • 29 Oct 2025 - 31 Oct 2025
 • Free, booking required
 • All ages



Drawn Together Still Life
 • The Courtauld Gallery, London
 • 31 Oct 2025, 10:30 - 15:30
 • £12.00
 • 6 - 18+, Seniors



Design & Stitch: Fabric Wall Art
 • The Goodlife Centre, London
 • 27 Oct 2025, 13:00 - 14:00
 • Free, booking required
 • All ages



Need help applying for the Healthy Start scheme?

If you're eligible, we can help you apply.
For more information, just ask a member of our team.



www.healthystart.nhs.uk

[Twitter](#) [Facebook](#) @NHSHealthyStart

Bright Futures Islington

Would you like to be a Parent Champion?

Do you want to help families live healthier lives while building your skills and making new friends?

Join us as a Families for Life Champion!

We're looking for enthusiastic parent or carer volunteers to help promote healthy lifestyles in schools and communities. Whether it's chatting at the school gate, running fun workshops, or sharing events on WhatsApp - you can make a real difference!

What you'll do:

- Spread the word about health programmes like Family Kitchen and Taste Education
- Support school gate activities (flu jabs, oral health, parent surveys)
- Run parent workshops on healthy snacks, lunches, and breakfasts
- Share info through your networks and help families thrive

What you'll get:

- ◆ Free training & certificates
- ◆ Travel reimbursements
- ◆ Boost your CV & explore paid opportunities
- ◆ Build friendships & community connections
- ◆ Learn more about local services and healthy living

Flexible commitment: Just **one** activity per half term, with full support and training provided.

Ready to get involved?

Just fill out this short application (<https://forms.office.com/r/8paXEmFvBS>) by scanning the QR Code above.

Don't hesitate to email margherita.locatelli@islington.gov.uk for more information!

Families for Life Community
Champion Application Form - 2025





The Parent Place

A peer-led group. By parents, for parents.

Are you an Islington parent or carer of children aged 5-19?

Are you interested in learning about parenting from trained peer parents?

Would you like the opportunity to discuss a range of parenting topics in a safe space?

Would you like to share stories and learn in a mutual environment?

Bright Futures are piloting our first peer-led parent group, facilitated by our trained Parent Champions!

For more information, please email Lucy.Pollock@islington.gov.uk

When: Wednesday mornings from September–November 2025, 10am – 1pm
Where: Conewood Children's Centre

Self-referral required, please email Lucy.Pollock@islington.gov.uk with your name and contact details



Cooking Classes this autumn

AT ST LUKE'S COOKERY SCHOOL

ADULT COOK & EAT

FRIDAYS 11AM-1PM

October: 3rd, 17th and 24th

November: 7th, 14th, 21st and 28th

JUNIOR CHEF COOKING CLASSES (CHILDREN 8+)

WEDNESDAYS 4:30-6:30PM

October: 1st, 8th, 15th and 22nd


November: 5th, 12th, 19th and 26th



FEELING GOOD & LIVING WELL FAMILY SESSIONS

MONDAYS 4-6PM

September: 22nd and 29th

October: 6th and 13th

 St Luke's Community Centre, 90 Central St, London EC1V 8AJ

 info@slpt.org.uk  020 7549 8181

    @StLukesTrust Charity Number 207497





Paiwand



YOU ARE WELCOME!

FREE Refugee & Migrant Community Drop-In Weekly sessions at the Golden Lane Community Centre

Come and join us for a friendly weekly community session for Refugees & Migrants living in or near the City of London

What's on?

A weekly 2-hour morning drop-in with a rotating programme:

- Week 1: Women's Group
Safe space for women to meet, relax, and share experiences.
- Week 2: Family Sessions
Fun and friendly space for families with children of all ages.
- Week 3: Elderly Migrants Drop-In
Tea & chat, wellbeing activities, and advice for older community members.
- Week 4: Psycho-Education & Support Group
Emotional wellbeing, coping skills, and peer support.

All sessions include:

- ✓ Friendly atmosphere
- ✓ Free Tea & Snacks
- ✓ Activities and information sessions
- ✓ Safe space to meet new friends
- ✓ Free Advocacy, Immigration & Mental Health Support (please request in advance)

Where?

Golden Lane Community Centre
Fann Street, London EC1Y 0RN

When?

Monday mornings
10.00am - 12.00pm

Come when you can — No registration required.

Contact us:

Cityoutreach@[paiwand.com](mailto:cityoutreach@paiwand.com) or call us on: 020 8905 8770
www.paiwand.com

Funded by the National Lottery Community Fund



Coffee Mornings

at St Luke's

SEND Coffee Mornings

First Monday of
each month
9:30-11am

A supportive environment
for parents or carers of
SEND children



Macmillan Coffee Mornings

24th & 25th
September
11am-3pm

Join us for a coffee and a cake
whilst raising money for
Macmillan Cancer Support



This event is open
to everyone!



Carers for Carers

4th Tuesday of
each month
10:30am-12pm

Meet other carers for a
friendly chat

These events are for members & Islington
residents only

St Luke's Community Centre, 90 Central St, London EC1V 8AJ

info@slpt.org.uk 020 7549 8181

Charity Number 207497 @StLukesTrust



FREE WEEKLY SEND PARENT GROUP

at St Luke's Community Centre

Fridays 10am – 12pm, Family Hub

(from Friday 7th November for 6 weeks)

Join us for a warm and welcoming group, designed to support parents with the unique experiences of raising children with SEND.



WHAT TO EXPECT?

OPEN TO ALL!

- A relaxed, supportive space to talk, listen and reflect
- Gentle creative activities that help you tell your story
- Free refreshments and a hot lunch after each session
- A chance to meet other parents raising children with SEND

Sessions, led by experienced facilitator, Candice, will use the Tree of Life - a creative approach to explore your personal growth and family well-being. We ask everybody to attend all sessions to get the most out of the group.

If you are interested, please sign up at Reception or contact Lina on 07790 544870



St Luke's Community Centre, 90 Central St, London EC1V 8AJ



info@slpt.org.uk



020 7549 8181



@StLukesTrust

Charity Number 207497

ST LUKE'S
COMMUNITY
CENTRE

UPCOMING COMMUNITY EVENTS AT ST LUKE'S

Dickens Through Drama Workshops

Friday 26th September - 21st November, 1-4pm

Join us and The Charles Dickens Museum for free (for members) workshops inspired by the world of Charles Dickens.



Baby Item Swap

Friday 17th October, 11am-1pm at The Peel

Donate your pre-loved baby & child items to the Peel prior to the event and then take what you need on the day!



Sadler's Wells x Akram Khan Dance Classes

From 3rd November, every Monday, 10:30am-12pm

Led by artist Shivaangee Agrawal, join our class called Woven Tapestries, taking inspiration from Akram Khan's dance show Thikra.



ST LUKE'S
COMMUNITY
CENTRE

TO SIGN UP/ MORE INFORMATION, PLEASE SEE OUR WEBSITE.

St Luke's Community Centre, 90 Central St, London EC1V 8AJ www.slpt.org.uk 020 7549 8181

Introducing St Luke's Community Shop & Cafe

Our food hub is changing to a more sustainable and empowering food and support service for households in St Luke's area of benefit on a low income.




Our Community Shop and Café combine to help residents towards stability and independence - members can choose a basket of food for a £5 contribution to top up their weekly shop and get information, advice and support on St Luke's services and other local agencies for longer-term support.



St Luke's Community Shop and Café will open every Wednesday from September. It's an easy, low-cost way to boost regular shopping. For more information about registering, email info@slpt.org.uk or pop into our reception for a Community Shop form.

Supported by



 St Luke's Community Centre, 90 Central St, London EC1V 8AJ

 info@slpt.org.uk  020 7549 8181

 @StLukesTrust Charity Number 207497



BECOME A MEMBER TODAY!

FOR JUST £5 YOU CAN BECOME A LIFE TIME MEMBER WHILE YOU LIVE IN OUR AREA!



You are eligible to become a member if you live in our area of benefit. Check out our website to see!

WWW.SLPT.ORG.UK



St Luke's Community Centre, 90
Central St, London EC1V 8AJ



info@slpt.org.uk



020 7549 8181

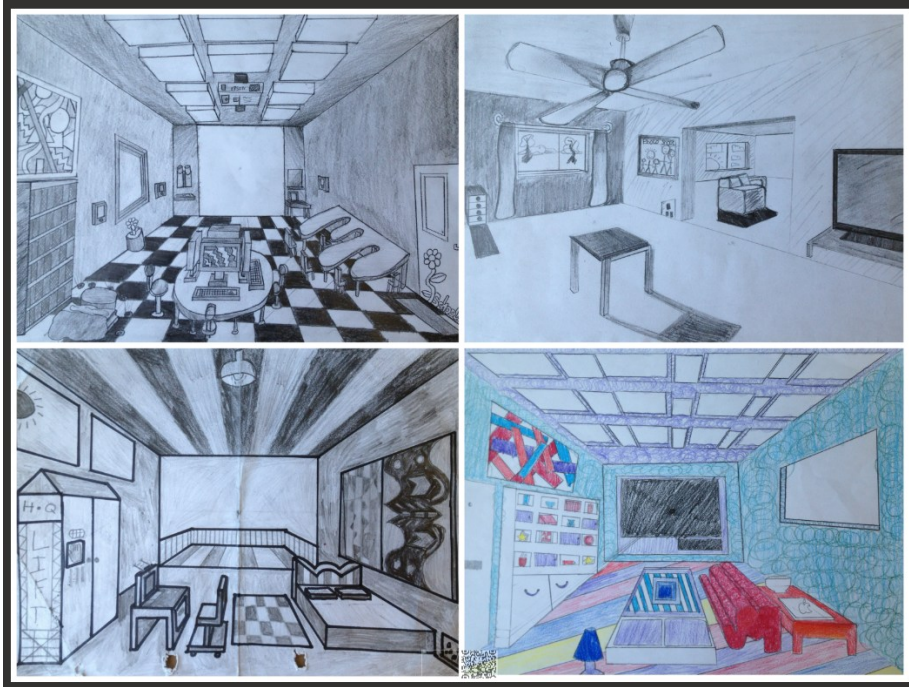


@StLukesTrust

Charity Number 207497



My Space: Inside Out



Your space, your story! Learn to draw like an architect and design your own unique spaces. Master professional drawing techniques and create a beautifully illustrated foldout booklet.

Ages: 10–14 year olds (Years 6–9)

Times: Thursdays from 6th Nov - 11th Dec 2025 - 4:15 PM - 6:15 PM

Location: shifted Makerspace, Holborn Library

Cost: Free

Website: <https://shifted.org.uk/my-space-inside-out>

QR:



Nick Turner

Founder / Co-Director

Islington PESSPA



- Physical Education
- School Sport
- Physical Activity



FREE Family Swimming Lessons

We are running free swimming courses for all families, and we are encouraging applications from black and Asian families

Data from the Black Swimming Association shows that 95% of Black adults don't swim and 80% of Black children don't swim; 93% of Asian adults don't swim and 78% Asian children don't

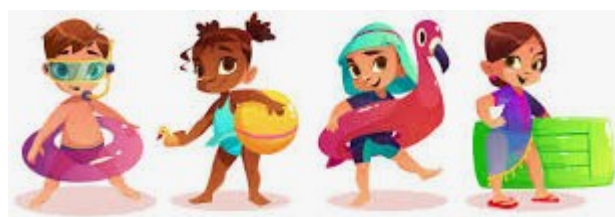
swim.

The free eight-week swimming course which will be starting in January 2026. Lessons are on Saturdays, 1.30-2.30pm at Cally Pool.

Each member of the family will be given free swimming equipment - a swim cap, swimming goggles and a kit bag.

These lessons will enable all members of the family to spend some fun quality time together and to learn and/or improve upon the lifesaving skill of swimming.

Spaces are limited, so if you would like to take part in these swimming lessons please complete this [Family swimming lessons entry form](#)



CHRISTMAS FAYRE!

SATURDAY 6TH DECEMBER

11:30AM-3PM

OPEN TO ALL!

A **FREE** DAY OUT FOR EVERYONE

ACTIVITIES INCLUDE:

SANTA'S GROTTO FROM 12PM, £3 ENTRY WITH GIFT

PLEASE PRE-PURCHASE A TICKET AT RECEPTION


LUNCH AVAILABLE FROM 12:30PM - £2 PER MEAL

- FESTIVE CARD MAKING
- REINDEER FOOD MAKING
- DIY BRACELETS
- LETTERS TO SANTA
- FACE PAINTING
- COOKERY SCHOOL ACTIVITY
- XMAS DECOR CRAFTS
- BAUBLE DECORATING
- DECORATE SANTA HATS & STOCKINGS

& SO MUCH MORE!

 St Luke's Community Centre, 90 Central St, London EC1V 6AJ

 info@slpt.org.uk

 020 7549 8181

 @StLukesTrust Charity Number 207497

 ISLINGTON
For a more equal future

**Worrall
& Fuller**
Est 1689

ST LUKE'S
COMMUNITY
CENTRE



Incredible Years Parenting Group

For parents of children aged
1-3 years Toddlers and 3-6 years early childhood

- Would you like to share and learn new parenting skills?
- Do you want to be a more confident and happier parent?
- Would you like to learn more about how you can support your child's development?

Increase your confidence in parenting your children and learn new skills in a relaxed and friendly group.

For more information, please contact:
brightstart@islington.gov.uk

Parents are required to meet facilitators for an assessment before being offered a place in the group.

To register interest, please scan the QR Code or use link <https://forms.office.com/e/4wqeWDGdj4>



13-week course
(Term-time only)

Crèche available for parents
attending the group.

Groups run
March – July & September – January

Family Hubs, Start for Life





Early Help Attendance Mentors

FAQs

What are the main responsibilities of the Attendance Mentors?

- **1:1 sessions** with children/young people – primarily in school, occasionally at home and/or community.
- **Identify and address** the underlying reasons for declining attendance.
- **Create and provide tailored support plans**, including help with routines and strategies to rebuild confidence in attending school.
- **Collaborate** with school and families to ensure support can be put in place.

How long will the intervention last?

- Each individual **intervention will run for up to 8 weeks**.

Who is eligible for the Attendance Mentors Programme?

- Children/young people with **attendance between 80-90%**, where attendance is the primary concern.
- Children/young people who **are not currently open to Children's Social Care or Early Help family support**.
- Children/young people who are **keen to work alongside a mentor to improve** their attendance.

The Early Help Attendance Mentors Programme is an **8-week initiative** designed to help children/young people whose school attendance has dropped to between 80-90%. **Our goal is to boost their attendance** and help them get back on track through focused, short-term support.

Is this something your child would benefit from?

Speak to a staff member at your child's school who can assist you with a referral.

Please note: Each referral will be considered for suitability for the programme.



Meet The Mentors



Left – right: Remi Davis, Anna Fleming, Uma Mackie, Gretchen Harney

Remi Davis

I worked previously as a Pastoral Manager and Safeguarding Officer in a secondary school. Leading on targeted interventions for students facing a range of complex challenges, including persistent absence, mental health needs, and safeguarding concerns.

I hold a BA in Archaeology and Anthropology and an MA in Education.

Fun fact: I enjoy practicing Yoga and playing netball!!

Anna Fleming

I was a Family Support Practitioner in Bright Futures, leading targeted interventions with families for up to 6 months. This included co-running the school-age Incredible Years parenting programme.

I am a recent masters graduate of the Tavistock and Portman clinic, studying how to use a psychoanalytic observational approach in my work with families.

Fun fact: I am originally from Northern Ireland!

Uma Mackie

I have worked as an Education Support Practitioner for Bright Futures for nearly two years. Before that, I worked across different education settings supporting young people to access education.

I have an MA in Education and Psychology and over 5 years' experience working with young people and their families.

Fun fact: I love taking my dog, Syd, for walks in different London parks!

Gretchen Harney

I worked in a young people's substance use service, offering tailored 1:1 support to young people and families. This included community outreach, targeted interventions and general health and wellbeing sessions in secondary schools.

My academic background consists of BSc Psychology and MSc Child Development.

Fun fact: I crochet bags!