



### Fortune Street Park Friends



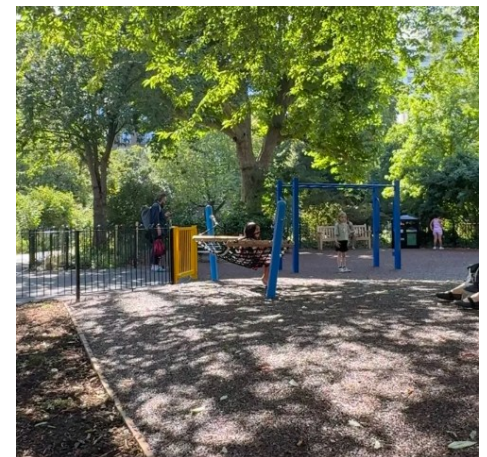
The **Friends of the Park** voluntary group established in 2005 consists of local City and Islington residents, who feel passionately about our local park.

Over the years they have fundraised and organised events in this small popular park. There is an annual community fun day that they organise and fundraise for – well attended by the local community and appreciated by all that come along.

They also care about the maintenance and security of the park, working in partnership with [Islington Greenspaces](#) . They also volunteer to lock the park in the evenings and at weekend safeguarding the park for all of us.

This is just a **friendly reminder** from The Friends of the Park to let everyone know that cycling in the park is **strictly not allowed**. It poses a risk to all park users, and there have been a few near misses involving bikes (both adult and child riders).

Please help us keep everyone safe by dismounting and encouraging your children to do the same before entering the park, reminding them of this rule.





The Peel's community party

FRIDAY  
30TH JAN  
6-9PM

# Dish & Jam

Join us for rhythm and dancing

JOINING US THIS  
MONTH MR C &  
DJ WILLZ

TICKETS: £5  
PER ADULT  
(KIDS FREE)



THE  
Peel

A COMMUNITY EVENT  
FOR ALL OF THE FAMILY TO ENJOY!

THIS MONTH WE HAVE ONE OF OUR OWN,  
DJ WILLZ TEAMING UP WITH MR.C

WE ENCOURAGE YOU TO BRING A CULINARY DISH  
OF YOUR CHOICE TO SHARE

FREE NIBBLES AND SOFT DRINKS INCLUDED. BYOB!

The Peel, 3 Corners Centre, Northampton Road, EC1R 0HU  
020 7837 6082



# THE PEEL



## Food Pop-ups

MONDAY-5.30PM PRET FOOD AT BRUNSWICK ESTATE, THE EMBERTON ROOM, GROUND FLOOR, EMBERTON COURT, TOMPION STREET, EC1V 0EP

TUESDAY-1PM SCOTTISH AND SAME DAY SURPLUS READY MEALS ONLY. AT THE PEEL, NORTHAMPTON ROAD, EC1R 0HU (GET A TICKET & GRAB A COFFEE FROM 12.15PM)

WEDNESDAY-12PM FRESH FOOD AVAILABLE AT THE PEEL, NORTHAMPTON ROAD, EC1R 0HU (GET A TICKET & GRAB A COFFEE FROM 11AM)

WEDNESDAY-5.30PM PRET FOOD AT FINSBURY ESTATE UNITY HALL, MICHAEL CLIFFE HOUSE, SKINNER STREET EC1R 0WW

**\*\*PLEASE ARRIVE ON TIME TO AVOID DISAPPOINTMENT\*\***

# BABY AND CHILDREN'S CLOTHES, BOOKS AND TOYS SWAP

St Luke's & The Peel

FRIDAY 23<sup>RD</sup> JANUARY 2026

at St Luke's Community Centre  
11 A M - 1 P M

FRIDAY 17<sup>TH</sup> APRIL 2026

at The Peel Institute  
11 A M - 1 P M




If you are in need of pre-loved baby/children's  
clothes, toys and books, come to our swap  
event for items for ages 0-8 years!

ACCEPTING DONATIONS FROM JANUARY 4<sup>TH</sup>,  
PLEASE DROP THEM OFF AT RECEPTION!

90 CENTRAL ST, SOUTH ISLINGTON, EC1V 8AJ

 @StLukesTrust Charity Number 207487  
 [info@splt.org.uk](mailto:info@splt.org.uk)  020 7549 8181



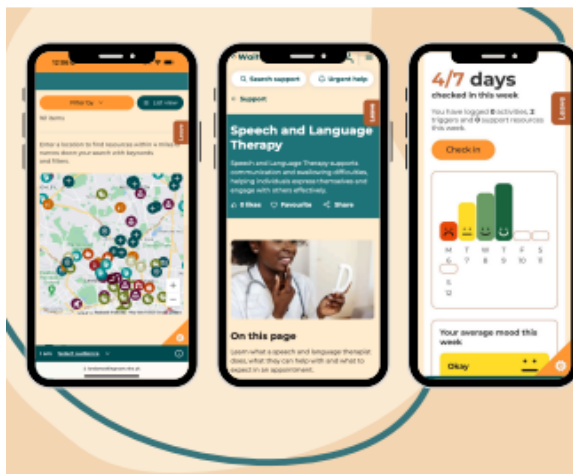
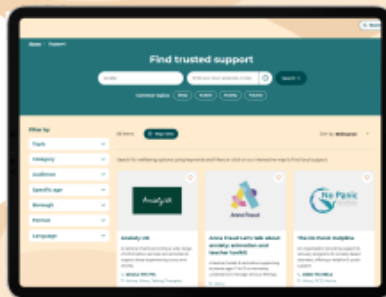
 @PeelInstitute  
 @ThePeelInstitute  
 @peelinstitute



# Waiting Room

<https://londonwaitingroom.nhs.uk/>

- ★ Your **one-stop shop** to finding support for your mental health.
- ★ Use our **trusted search** to find vetted resources across London



“The information provided by The Waiting Room is vital. The links available on The Waiting Room site allow families to know where to turn in the interim giving them more opportunities to find help, feel less alone and “wait well”.

Parent in Barnet



## Create an account today

Make the most of all the Waiting Room features by creating an account



Journal your thoughts



Set and track your goals



Save your favourites



Read our daily updates

Designed by You, for You

<https://londonwaitingroom.nhs.uk/contact-us>



For Young People

For Adults

For Parents & Carers

For Professionals

Get in touch with us using the QR code or the link.



As the winter term comes to an end, we'd also like to highlight our new resource 'Support during the Festive Period' which can be accessed here:

<https://londonwaitingroom.nhs.uk/support-resources-festive-period>.

This page includes support across the festive period, including events for young people, adults & families and helpful articles that offer advice on looking after your mental health during this season.



UNION  
CHAPEL



**WHEN**

Monday 16 February 2026

Doors 3pm

Start 4pm

Ends 5pm

Recommended for children  
up to 9 years old + their  
adults!

## Mrs H Sings 'From The Top Of The Tower'

For free tickets to this event click **BOOK NOW** button above

### An immersive music experience to kick start half-term for kids up to 9 y/o and their adults, as part of Union Chapel's Sunday School Stories Project.

Join us for a free, time travelling, light hearted, life affirming show about helping one another inspired by Union Chapel's 200+ year archive and legacy of supporting families from all walks of life. This one-off show features songs co-created with Year 2 students from Ambler Primary School and Children's Centre.

**Mrs H Sings** is a much loved, award-winning act for children that brings music and joy to communities up and down the country. With the use of puppetry, song, dance and interactive mischief, the six-piece band will take families on a light hearted, life affirming show celebrating the simple act of helping one another.

Inspiration for this show has been taken from articles from the late Victorian Union Chapel Magazine that featured a fictional clock character in the Union Chapel tower that passes comment on the life and times going on below and all around, including inside the church itself.

Alongside an actor and her band, Mrs H Sings take families back in time, using music old and new, whilst celebrating the sentiments of care, kindness and community Union Chapel was built on, featuring songs co-produced with local students.

"Mrs H Sings are delighted at being part of the Sunday School restoration project. Having performed in the borough for over 20 years it is a joy to be back and celebrating the Union Chapel. So far our work has been to engage with local school children to help write material for our one off show in Feb. It has been such a joy to have an opportunity to write new material and the songs are already being played and learnt in to our weekly sessions. The culmination of all this is to be a theatrical show in the main Union Chapel hall and that is such an exciting prospect for the band to realise, we cant wait!" - Mrs H Singalong Band

For more information search for - [Mrs H Sings 'From The Top Of The Tower' | What's On | Union Chapel](#)

### Get creative with fabric, fashion, crafts and textile and take part in these workshops led by *Dirty Looks* artists **Matty Bovan, Ayumi Kajiwara and Alice Potts.**

Join us for a vibrant day celebrating fashion, craft and sustainability as we mark the final week of our exhibition *Dirty Looks*.

Guided by artists Matty Bovan, Ayumi Kajiwara and Alice Potts, you will transform pre-loved items from your wardrobe into something new, experiment with found objects to create garments and sculptural pieces and explore the exciting potential of seaweed-based biomaterials. Whether you're a fashion enthusiast or just curious to try something different, this is a fun, hands-on way to rethink how we make and wear.

Round off the day with a cuppa and chat with the artists and fellow makers.

See the full programme below.

Tagged with: **TAKE PART** **ART & DESIGN**

#### Age recommendation:

This day is open to all from ages 7+

All attendees under the age of 16 must come accompanied by an adult. Some workshops involve using hot water. Please always remain with your adult if you are under the age of 16.

## Programme

#### DIY Artistry: Live Tapestry Installation with Matty Bovan 11am - 3pm (drop-in), Conservatory Well

York-based designer Matty Bovan, whose fans include Björk, Rita Ora & Tilda Swinton, invites you to bring your own pre-loved garment or scraps of fabric to add to a live tapestry installation, demonstrating his DIY ethos and passion for repurposing materials, while extolling the freedom of creativity. Held within a secret clearing amongst sprawling banana plants and verdant succulents!

Suitable for all ages

#### Kitchen-to-Material: The Art of Making Bioplastic with Alice Potts 11am - 12noon | 12.15pm - 1.15pm | 1.30pm - 2.30pm | 2.45pm - 3.45pm Garden Room

Discover the revolutionary world of biomaterials and unlock the secrets to circular design by creating bespoke, biodegradable plastic films using basic kitchen ingredients.

Suitable for ages 7+

Timed slots, first come first served

#### Found Futures: Wearable Sculptures with Ayumi Kajiwara 11am - 3pm (drop-in), Garden Room

Join artist /designer Ayumi Kajiwara to explore how to use found objects to create unique wearable sculptures or garments that explore memory and transformation. This workshop encourages you to rethink beauty and sustainability through the process of making together.

Suitable for all ages

#### Afternoon Tea with Plum & Matty Bovan 3.15pm - 4pm, Conservatory Well

An audience with two wild magpies: Matty Bovan and his mum Plum share how creativity forms the backbone to their relationship, how Plum has inspired Matty's design practice, and the unique synergy of their combined penchant for DIY and repurposing. Consume their mutual affection for tea and cake too! Bring your own pre-loved garment or scraps of fabric to add to Matty's live tapestry installation.

Suitable for ages 12+

Limited capacity - sign up on day



Williamz Omope



View 4 images



## Early Help Attendance Mentors

### FAQs

#### What are the main responsibilities of the Attendance Mentors?

- **1:1 sessions** with children/young people – primarily in school, occasionally at home and/or community.
- **Identify and address** the underlying reasons for declining attendance.
- **Create and provide tailored support plans**, including help with routines and strategies to rebuild confidence in attending school.
- **Collaborate** with school and families to ensure support can be put in place.

#### How long will the intervention last?

- Each individual **intervention will run for up to 8 weeks.**

#### Who is eligible for the Attendance Mentors Programme?

- Children/young people with **attendance between 80–90%**, where attendance is the primary concern.
- Children/young people who **are not currently open to Children's Social Care or Early Help family support.**
- Children/young people who are **keen to work alongside a mentor to improve** their attendance.

The Early Help Attendance Mentors Programme is an **8-week initiative** designed to help children/young people whose school attendance has dropped to between 80-90%. **Our goal is to boost their attendance** and help them get back on track through focused, short-term support.

Is this something your child would benefit from?  
**Speak to a staff member at your child's school** who can assist you with a referral.

*Please note: Each referral will be considered for suitability for the programme.*





## Need help applying for the Healthy Start scheme?

If you're eligible, we can help you apply.  
For more information, just ask a member of our team.



[www.healthystart.nhs.uk](http://www.healthystart.nhs.uk)

[Twitter](https://twitter.com/NHSHealthyStart) [Facebook](https://www.facebook.com/NHSHealthyStart) @NHSHealthyStart

# Bright Futures Islington

**Would you like to be a Parent Champion?**

**Do you want to help families live healthier lives while building your skills and making new friends?**

**Join us as a Families for Life Champion!**

We're looking for enthusiastic parent or carer volunteers to help promote healthy lifestyles in schools and communities. Whether it's chatting at the school gate, running fun workshops, or sharing events on WhatsApp - you can make a real difference!

## What you'll do:

- Spread the word about health programmes like Family Kitchen and Taste Education
- Support school gate activities (flu jabs, oral health, parent surveys)
- Run parent workshops on healthy snacks, lunches, and breakfasts
- Share info through your networks and help families thrive

## What you'll get:

- ◆ Free training & certificates
- ◆ Travel reimbursements
- ◆ Boost your CV & explore paid opportunities
- ◆ Build friendships & community connections
- ◆ Learn more about local services and healthy living

**Flexible commitment:** Just **one** activity per half term, with full support and training provided.

## Ready to get involved?

Just fill out this short application (<https://forms.office.com/r/8paXEmFvBS>) by scanning the QR Code above.

Don't hesitate to email [margherita.locatelli@islington.gov.uk](mailto:margherita.locatelli@islington.gov.uk) for more information!

Families for Life Community  
Champion Application Form - 2025





Paiwand



## YOU ARE WELCOME!

### FREE Refugee & Migrant Community Drop-In Weekly sessions at the Golden Lane Community Centre

**Come and join us for a friendly weekly community session for Refugees & Migrants living in or near the City of London**

#### What's on?

A weekly 2-hour morning drop-in with a rotating programme:

- Week 1: Women's Group  
Safe space for women to meet, relax, and share experiences.
- Week 2: Family Sessions  
Fun and friendly space for families with children of all ages.
- Week 3: Elderly Migrants Drop-In  
Tea & chat, wellbeing activities, and advice for older community members.
- Week 4: Psycho-Education & Support Group  
Emotional wellbeing, coping skills, and peer support.

#### All sessions include:

- ✓ Friendly atmosphere
- ✓ Free Tea & Snacks
- ✓ Activities and information sessions
- ✓ Safe space to meet new friends
- ✓ Free Advocacy, Immigration & Mental Health Support (please request in advance)

#### Where?

Golden Lane Community Centre  
Fann Street, London EC1Y 0RN

#### When?

Monday mornings  
10.00am - 12.00pm

**Come when you can — No registration required.**

#### Contact us:

[Cityoutreach@paiwand.com](mailto:Cityoutreach@paiwand.com) or call us on: 020 8905 8770  
[www.paiwand.com](http://www.paiwand.com)

**Funded by the National Lottery Community Fund**

# Introducing St Luke's Community Shop & Cafe

Our food hub is changing to a more sustainable and empowering food and support service for households in St Luke's area of benefit on a low income.



Our Community Shop and Café combine to help residents towards stability and independence - members can choose a basket of food for a £5 contribution to top up their weekly shop and get information, advice and support on St Luke's services and other local agencies for longer-term support.



St Luke's Community Shop and Café will open every Wednesday from September. It's an easy, low-cost way to boost regular shopping. For more information about registering, email [info@slpt.org.uk](mailto:info@slpt.org.uk) or pop into our reception for a Community Shop form.

Supported by



St Luke's Community Centre, 90 Central St, London EC1V 8AJ

✉ [info@slpt.org.uk](mailto:info@slpt.org.uk) ☎ 020 7549 8181



@StLukesTrust

Charity Number 207497



# BECOME A MEMBER TODAY!

**FOR JUST £5 YOU CAN BECOME  
A LIFE TIME MEMBER WHILE  
YOU LIVE IN OUR AREA!**



**You are eligible to become a member  
if you live in our area of benefit.  
Check out our website to see!**

**WWW.SLPT.ORG.UK**



St Luke's Community Centre, 90  
Central St, London EC1V 8AJ



[info@slpt.org.uk](mailto:info@slpt.org.uk)



020 7549 8181



@StLukesTrust

Charity Number 207497



# TEMPLE CITY SINGERS

## TEMPLE CHURCH'S NEW CITY-WIDE CHOIR FOR CHILDREN IN YEAR 2 - 6



Do you like to sing and be part of a team?  
Children in Years 2 - 6 are invited to join Temple City Singers,  
Temple Church's exciting new children's choir!

Explore the beauty of choral music, learn musical skills, and make new friends in a welcoming, inspiring musical team, performing in some of the city's most historic and beautiful buildings.



**Rehearsals: Tuesdays at 4.30pm - 5.30pm**

St Vedast-alias-Foster, EC2V 6HH and Temple Church, EC4Y 7BB

Spring Performance: Tuesday 10th March 2026, Temple Church, 6pm



**JOIN NOW!**

Email [yvette@templechurch.com](mailto:yvette@templechurch.com)  
to register interest

## Spring Term Rehearsals 2026

January: 6<sup>th</sup>, 13<sup>th</sup>, 20<sup>th</sup>, 27<sup>th</sup>

February: 3<sup>rd</sup>, 10<sup>th</sup>, HALF TERM, 24<sup>th</sup>

March: 3<sup>rd</sup> (Temple Church), 10<sup>th</sup> (Temple Church), 17<sup>th</sup>, 24<sup>th</sup>

All rehearsals are held at St Vedast-alias-Foster, unless otherwise stated.



## Spring Term Performance

Tuesday 10th March 2026, Temple Church

Rehearsal: 4.30pm - 6pm (tea provided)

Performance at 6pm

### Cost?

Membership costs **£30 per term**.

If finances are a barrier, please get in touch as we may be able to offer you support.



## Why Join?

### Musical Development ◀

- Sing a wide range of choral music, from traditional to contemporary.
- Develop your musical and vocal skills through fun, high-quality rehearsals.

### Cultural Opportunities ◀

- Perform in a range of churches and venues across the City of London, opening doors to some of the capital's most beautiful and historic buildings, including Temple Church.

### Have fun! ◀

- Join a special musical team, make new friends, be inspired, and have fun!



Email [yvette@templechurch.com](mailto:yvette@templechurch.com) to register interest  
[www.templechurch.com](http://www.templechurch.com)

