



Fortune Street Park Friends



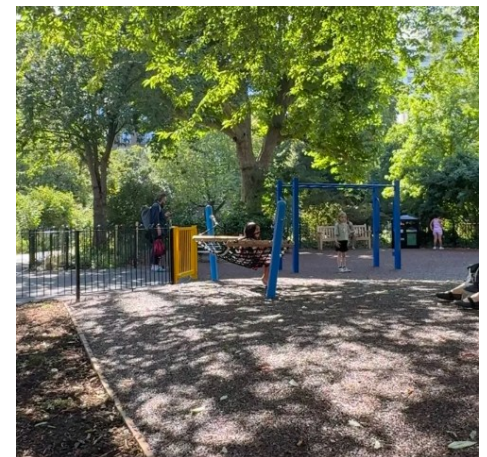
The **Friends of the Park** voluntary group established in 2005 consists of local City and Islington residents, who feel passionately about our local park.

Over the years they have fundraised and organised events in this small popular park. There is an annual community fun day that they organise and fundraise for – well attended by the local community and appreciated by all that come along.

They also care about the maintenance and security of the park, working in partnership with [Islington Greenspaces](#) . They also volunteer to lock the park in the evenings and at weekend safeguarding the park for all of us.

This is just a **friendly reminder** from The Friends of the Park to let everyone know that cycling in the park is **strictly not allowed**. It poses a risk to all park users, and there have been a few near misses involving bikes (both adult and child riders).

Please help us keep everyone safe by dismounting and encouraging your children to do the same before entering the park, reminding them of this rule.



FLASH SALE!

£200 OFF ALL CAMPS

**Mon 2nd Feb
at 10:00am**

FunTech Camps @ Prior Weston School

27 July to 21 August

 Roblox Game Designer Age 7 to 10	 Minecraft Mod Developer Age 7 to 10	 Minecraft Redstone Engineer Age 9 to 12	 Minecraft Game Coder Age 10 to 12
 Roblox Lua Coder Age 11 to 16	 Python Coder Age 10 to 16	 Python OOP Age 11 to 16	 Java Coder Age 11 to 16
 Hackathon Cyber Security Age 12 to 16	 3D Game Design Developer Age 10 to 14	 Python Game Coder Age 12 to 16	 Unity Game Coder Age 11 to 16
 A.I. Machine Learning Age 12 to 16	 Lego Robotics Coder Age 7 to 10	 Camp Swap Plans may change? Unlimited changes, zero fees.	 ★ ★ ★ ★ ★ 13,000+ Reviews 97% Recommend Us!

Robotics **Roblox** **Minecraft** **Game Coders** **Core Coding Skills** **AI & Advanced Tech**

CHILD CARE VOUCHERS & TAX-FREE CHILD CARE ACCEPTED

Book now www.funtech.co.uk

FunTech®

TERM TIME | CAMPS | GCSES | A LEVELS | PRIVATE | BESPOKE



Summer Camps

FLASH SALE

£200 OFF

2 FEBRUARY AT 10AM

First 200 Spaces

Coding & Tech

Holiday Camps | Term Time Courses | Private Tuition



Coding & Tech for ages 7 - 17

funtech.co.uk

FunTech 



The Peel's community party

FRIDAY
30TH JAN
6-9PM

Dish & Jam

Join us for rhythm and dancing

JOINING US THIS
MONTH MR C &
DJ WILLZ

TICKETS: £5
PER ADULT
(KIDS FREE)



THE
Peel

A COMMUNITY EVENT
FOR ALL OF THE FAMILY TO ENJOY!

THIS MONTH WE HAVE ONE OF OUR OWN,
DJ WILLZ TEAMING UP WITH MR.C

WE ENCOURAGE YOU TO BRING A CULINARY DISH
OF YOUR CHOICE TO SHARE

FREE NIBBLES AND SOFT DRINKS INCLUDED. BYOB!

The Peel, 3 Corners Centre, Northampton Road, EC1R 0HU
020 7837 6082

SOAP Box




DRAGON HALL TRUST

SOAPBOX AFTERSCHOOL CLUB!

Years 5 & 6 Only

Monday, Tuesday, Wednesday & Friday 3:45-5:30PM

69-85 Old Street, EC1V 9HX

MONDAY	TUESDAY WEDNESDAY	FRIDAY
		
<p>Young Women Only</p> <p>For Young Women Only. Covering diverse and creative activities in an intermixing setting of art, social skills, teamwork and cooking</p>	<p>Tuesday & Wednesday All Welcome</p> <p>All are welcome, with a focus on a weekly STEAM activity that blends creativity with learning new skills</p>	<p>Friday Drama Day!</p> <p>Step on stage and learn the craft of acting and delivering on stage, with Blaize from Make Believe & House Of Vox</p>

EMAIL EUGENIA@DRAGONHALL.ORG.UK OR CALL 07547 584831

ISLINGTON
For a more equal future



THE PEEL



Food Pop-ups

MONDAY-5.30PM PRET FOOD AT BRUNSWICK ESTATE, THE EMBERTON ROOM, GROUND FLOOR, EMBERTON COURT, TOMPION STREET, EC1V 0EP

TUESDAY-1PM SCOTTISH AND SAME DAY SURPLUS READY MEALS ONLY. AT THE PEEL, NORTHAMPTON ROAD, EC1R 0HU
(GET A TICKET & GRAB A COFFEE FROM 12.15PM)

WEDNESDAY-12PM FRESH FOOD AVAILABLE AT THE PEEL, NORTHAMPTON ROAD, EC1R 0HU
(GET A TICKET & GRAB A COFFEE FROM 11AM)

WEDNESDAY-5.30PM PRET FOOD AT FINSBURY ESTATE UNITY HALL, MICHAEL CLIFFE HOUSE, SKINNER STREET EC1R 0WW

****PLEASE ARRIVE ON TIME TO AVOID
DISAPPOINTMENT****

BABY AND CHILDREN'S CLOTHES, BOOKS AND TOYS SWAP

St Luke's & The Peel

FRIDAY 23RD JANUARY 2026

at St Luke's Community Centre
11 A M - 1 P M

FRIDAY 17TH APRIL 2026

at The Peel Institute
11 A M - 1 P M




If you are in need of pre-loved baby/children's
clothes, toys and books, come to our swap
event for items for ages 0-8 years!

ACCEPTING DONATIONS FROM JANUARY 4TH,
PLEASE DROP THEM OFF AT RECEPTION!

90 CENTRAL ST, SOUTH ISLINGTON, EC1V 8AJ

 @StLukesTrust Charity Number 207487
 info@splt.org.uk  020 7549 8181



 @PeelInstitute
 @ThePeelInstitute
 @peelinstitute



FREE

Half Term Sports For SEND Young People

Multi-Sport for SEND Young
People

Tuesday 17 February

Age 5-11 years -12:30pm-1:30pm

Age 12-18 years - 1:30pm-3pm

Golden Lane Leisure Centre

Fann St, EC1Y 0SH

Come and join coaches Sheldon and Bisi for
fun sports, games and activities at the
Centre.

For more info contact:
sport@cityoflondon.gov.uk



Booking essential.

Scan the QRcode or follow the link below:

fusion



<https://tinyurl.com/HalfTermSEND>

FREE

Half Term Sports For Young People

Multi-Sport for Young People
Thursday 19 February

Age 8-11 years- 12:30pm-1:45pm

Age 12-16 years - 1:45pm-3pm

Golden Lane Leisure Centre
Fann St, EC1Y 0SH

For more info contact:
sport@cityoflondon.gov.uk



Booking essential.

Scan the QRcode or follow the link below:

fusion



<https://tinyurl.com/HALFTERMCoL>

FIS
Family Information Service



15 and 30 hours Free early learning and childcare

Take steps toward supporting your child's development!

Social skills: spending quality time with other children and adults

Learning: young children learn while they play and explore

Routines: children gain confidence, independence, and a sense of security

Free hours are available for 38 weeks a year, or some providers will allow you to 'stretch' the hours over more weeks, using fewer hours each week.

How many hours of childcare can you get a week?

Age 9 months+	Age 2 years+	Age 3 years+
Working families 30 hours	Working families 30 hours	Working families 30 hours
	Families receiving some additional forms of government support 15 hours	All families 15 hours

Sign up for updates at beststartinlife.gov.uk

Free hours are available from the start of the term after your child turns the relevant age by 31 March, 31 August, or 31 December.



What can you get?

Age 9 months-4 years

30 hours a week – for eligible working families*; both parents need to be working.

Speak to your local childcare providers to find out what they are offering
Apply at beststartinlife.gov.uk

* **Eligible working families** – Where each parent is employed, earning less than £100,000 per year, and earns at least the equivalent of the National Minimum or Living Wage for 16 hours a week.

2 years

Families receiving government support

15 hours a week – for families receiving benefits or on a low wage. Also, for children looked after, families with no recourse to public funds, children receiving DLA or with an EHCP. Apply at islington.gov.uk/free2

Age 3-4

15 hours a week - for everyone; no need to apply.
Contact early years providers to ask about a place.

Tax-Free Childcare, Universal Credit

Eligible families may be entitled to Tax-Free Childcare or Universal Credit to support with childcare costs.

Any questions?

Contact Islington Family Information Service (FIS)

020 7527 5959

fis@islington.gov.uk

Follow us on Facebook

[@IslingtonFIS](https://www.facebook.com/IslingtonFIS)

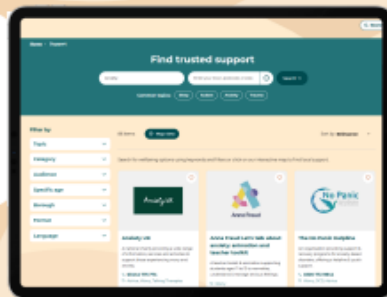
30 hours application deadline

My child turns the relevant age between	I can access my funded hours from	Application deadline
1 January to 31 March	Term starting on or after 1 April	31 March
1 April to 31 August	Term starting on or after 1 September	31 August
1 September to 31 December	Term starting on or after 1 January	31 December

Waiting Room

<https://londonwaitingroom.nhs.uk/>

- ★ Your **one-stop shop** to finding support for your mental health.
- ★ Use our **trusted search** to find vetted resources across London



The information provided by The Waiting Room is vital. The links available on The Waiting Room site allow families to know where to turn in the interim giving them more opportunities to find help, feel less alone and "wait well".

Parent in Barnet



Create an account today

Make the most of all the Waiting Room features by creating an account



Journal your thoughts



Set and track your goals



Save your favourites



Read our daily updates

Designed by You, for You

<https://londonwaitingroom.nhs.uk/contact-us>



For Young People

For Adults

For Parents & Carers

For Professionals

Get in touch with us using the QR code or the link.



As the winter term comes to an end, we'd also like to highlight our new resource 'Support during the Festive Period' which can be accessed here:

<https://londonwaitingroom.nhs.uk/support-resources-festive-period>.

This page includes support across the festive period, including events for young people, adults & families and helpful articles that offer advice on looking after your mental health during this season.



UNION
CHAPEL



WHEN

Monday 16 February 2026

Doors 3pm

Start 4pm

Ends 5pm

Recommended for children
up to 9 years old + their
adults!

Mrs H Sings 'From The Top Of The Tower'

For free tickets to this event click **BOOK NOW** button above

An immersive music experience to kick start half-term for kids up to 9 y/o and their adults, as part of Union Chapel's Sunday School Stories Project.

Join us for a free, time travelling, light hearted, life affirming show about helping one another inspired by Union Chapel's 200+ year archive and legacy of supporting families from all walks of life. This one-off show features songs co-created with Year 2 students from Ambler Primary School and Children's Centre.

Mrs H Sings is a much loved, award-winning act for children that brings music and joy to communities up and down the country. With the use of puppetry, song, dance and interactive mischief, the six-piece band will take families on a light hearted, life affirming show celebrating the simple act of helping one another.

Inspiration for this show has been taken from articles from the late Victorian Union Chapel Magazine that featured a fictional clock character in the Union Chapel tower that passes comment on the life and times going on below and all around, including inside the church itself.

Alongside an actor and her band, Mrs H Sings take families back in time, using music old and new, whilst celebrating the sentiments of care, kindness and community Union Chapel was built on, featuring songs co-produced with local students.

"Mrs H Sings are delighted at being part of the Sunday School restoration project. Having performed in the borough for over 20 years it is a joy to be back and celebrating the Union Chapel. So far our work has been to engage with local school children to help write material for our one off show in Feb. It has been such a joy to have an opportunity to write new material and the songs are already being played and learnt in to our weekly sessions. The culmination of all this is to be a theatrical show in the main Union Chapel hall and that is such an exciting prospect for the band to realise, we cant wait!" - Mrs H Singalong Band

For more information search for - [Mrs H Sings 'From The Top Of The Tower'](#) | [What's On](#) | [Union Chapel](#)

Get creative with fabric, fashion, crafts and textile and take part in these workshops led by *Dirty Looks* artists **Matty Bovan, Ayumi Kajiwara and Alice Potts.**

Join us for a vibrant day celebrating fashion, craft and sustainability as we mark the final week of our exhibition *Dirty Looks*.

Guided by artists Matty Bovan, Ayumi Kajiwara and Alice Potts, you will transform pre-loved items from your wardrobe into something new, experiment with found objects to create garments and sculptural pieces and explore the exciting potential of seaweed-based biomaterials. Whether you're a fashion enthusiast or just curious to try something different, this is a fun, hands-on way to rethink how we make and wear.

Round off the day with a cuppa and chat with the artists and fellow makers.

See the full programme below.

Tagged with: **TAKE PART** **ART & DESIGN**

Age recommendation:

This day is open to all from ages 7+

All attendees under the age of 16 must come accompanied by an adult. Some workshops involve using hot water. Please always remain with your adult if you are under the age of 16.

Programme

DIY Artistry: Live Tapestry Installation with Matty Bovan 11am - 3pm (drop-in), Conservatory Well

York-based designer Matty Bovan, whose fans include Björk, Rita Ora & Tilda Swinton, invites you to bring your own pre-loved garment or scraps of fabric to add to a live tapestry installation, demonstrating his DIY ethos and passion for repurposing materials, while extolling the freedom of creativity. Held within a secret clearing amongst sprawling banana plants and verdant succulents!

Suitable for all ages

Kitchen-to-Material: The Art of Making Bioplastic with Alice Potts 11am - 12noon | 12.15pm - 1.15pm | 1.30pm - 2.30pm | 2.45pm - 3.45pm Garden Room

Discover the revolutionary world of biomaterials and unlock the secrets to circular design by creating bespoke, biodegradable plastic films using basic kitchen ingredients.

Suitable for ages 7+

Timed slots, first come first served

Found Futures: Wearable Sculptures with Ayumi Kajiwara 11am - 3pm (drop-in), Garden Room

Join artist /designer Ayumi Kajiwara to explore how to use found objects to create unique wearable sculptures or garments that explore memory and transformation. This workshop encourages you to rethink beauty and sustainability through the process of making together.

Suitable for all ages

Afternoon Tea with Plum & Matty Bovan 3.15pm - 4pm, Conservatory Well

An audience with two wild magpies: Matty Bovan and his mum Plum share how creativity forms the backbone to their relationship, how Plum has inspired Matty's design practice, and the unique synergy of their combined penchant for DIY and repurposing. Consume their mutual affection for tea and cake too! Bring your own pre-loved garment or scraps of fabric to add to Matty's live tapestry installation.

Suitable for ages 12+

Limited capacity - sign up on day



Williamz Omope



View 4 images



Early Help Attendance Mentors

FAQs

What are the main responsibilities of the Attendance Mentors?

- **1:1 sessions** with children/young people – primarily in school, occasionally at home and/or community.
- **Identify and address** the underlying reasons for declining attendance.
- **Create and provide tailored support plans**, including help with routines and strategies to rebuild confidence in attending school.
- **Collaborate** with school and families to ensure support can be put in place.

How long will the intervention last?

- Each individual **intervention will run for up to 8 weeks.**

Who is eligible for the Attendance Mentors Programme?

- Children/young people with **attendance between 80–90%**, where attendance is the primary concern.
- Children/young people who **are not currently open to Children's Social Care or Early Help family support.**
- Children/young people who are **keen to work alongside a mentor to improve** their attendance.

The Early Help Attendance Mentors Programme is an **8-week initiative** designed to help children/young people whose school attendance has dropped to between 80-90%. **Our goal is to boost their attendance** and help them get back on track through focused, short-term support.

Is this something your child would benefit from?
Speak to a staff member at your child's school who can assist you with a referral.

Please note: Each referral will be considered for suitability for the programme.





Need help applying for the Healthy Start scheme?

If you're eligible, we can help you apply.
For more information, just ask a member of our team.



www.healthystart.nhs.uk

[Twitter](https://twitter.com/NHSHealthyStart) [Facebook](https://www.facebook.com/NHSHealthyStart) @NHSHealthyStart

Bright Futures Islington

Would you like to be a Parent Champion?

Do you want to help families live healthier lives while building your skills and making new friends?

Join us as a Families for Life Champion!

We're looking for enthusiastic parent or carer volunteers to help promote healthy lifestyles in schools and communities. Whether it's chatting at the school gate, running fun workshops, or sharing events on WhatsApp - you can make a real difference!

What you'll do:

- Spread the word about health programmes like Family Kitchen and Taste Education
- Support school gate activities (flu jabs, oral health, parent surveys)
- Run parent workshops on healthy snacks, lunches, and breakfasts
- Share info through your networks and help families thrive

What you'll get:

- ◆ Free training & certificates
- ◆ Travel reimbursements
- ◆ Boost your CV & explore paid opportunities
- ◆ Build friendships & community connections
- ◆ Learn more about local services and healthy living

Flexible commitment: Just **one** activity per half term, with full support and training provided.

Ready to get involved?

Just fill out this short application (<https://forms.office.com/r/8paXEmFvBS>) by scanning the QR Code above.

Don't hesitate to email margherita.locatelli@islington.gov.uk for more information!

Families for Life Community
Champion Application Form - 2025





Paiwand



YOU ARE WELCOME!

FREE Refugee & Migrant Community Drop-In Weekly sessions at the Golden Lane Community Centre

Come and join us for a friendly weekly community session for Refugees & Migrants living in or near the City of London

What's on?

A weekly 2-hour morning drop-in with a rotating programme:

- Week 1: Women's Group
Safe space for women to meet, relax, and share experiences.
- Week 2: Family Sessions
Fun and friendly space for families with children of all ages.
- Week 3: Elderly Migrants Drop-In
Tea & chat, wellbeing activities, and advice for older community members.
- Week 4: Psycho-Education & Support Group
Emotional wellbeing, coping skills, and peer support.

All sessions include:

- ✓ Friendly atmosphere
- ✓ Free Tea & Snacks
- ✓ Activities and information sessions
- ✓ Safe space to meet new friends
- ✓ Free Advocacy, Immigration & Mental Health Support (please request in advance)

Where?

Golden Lane Community Centre
Fann Street, London EC1Y 0RN

When?

Monday mornings
10.00am - 12.00pm

Come when you can — No registration required.

Contact us:

Cityoutreach@paiwand.com or call us on: 020 8905 8770
www.paiwand.com

Funded by the National Lottery Community Fund

Introducing St Luke's Community Shop & Cafe

Our food hub is changing to a more sustainable and empowering food and support service for households in St Luke's area of benefit on a low income.




Our Community Shop and Café combine to help residents towards stability and independence - members can choose a basket of food for a £5 contribution to top up their weekly shop and get information, advice and support on St Luke's services and other local agencies for longer-term support.



St Luke's Community Shop and Café will open every Wednesday from September. It's an easy, low-cost way to boost regular shopping. For more information about registering, email info@slpt.org.uk or pop into our reception for a Community Shop form.

Supported by



 St Luke's Community Centre, 90 Central St, London EC1V 8AJ

 info@slpt.org.uk  020 7549 8181

 @StLukesTrust Charity Number 207497



BECOME A MEMBER TODAY!

**FOR JUST £5 YOU CAN BECOME
A LIFE TIME MEMBER WHILE
YOU LIVE IN OUR AREA!**



**You are eligible to become a member
if you live in our area of benefit.
Check out our website to see!**

WWW.SLPT.ORG.UK



St Luke's Community Centre, 90
Central St, London EC1V 8AJ



info@slpt.org.uk



020 7549 8181



@StLukesTrust

Charity Number 207497



TEMPLE CITY SINGERS

TEMPLE CHURCH'S NEW CITY-WIDE CHOIR FOR CHILDREN IN YEAR 2 - 6



Do you like to sing and be part of a team?
Children in Years 2 - 6 are invited to join Temple City Singers,
Temple Church's exciting new children's choir!

Explore the beauty of choral music, learn musical skills, and make new friends in a welcoming, inspiring musical team, performing in some of the city's most historic and beautiful buildings.



Rehearsals: Tuesdays at 4.30pm - 5.30pm

St Vedast-alias-Foster, EC2V 6HH and Temple Church, EC4Y 7BB

Spring Performance: Tuesday 10th March 2026, Temple Church, 6pm



JOIN NOW!

Email yvette@templechurch.com
to register interest

Spring Term Rehearsals 2026

January: 6th, 13th, 20th, 27th

February: 3rd, 10th, HALF TERM, 24th

March: 3rd (Temple Church), 10th (Temple Church), 17th, 24th

All rehearsals are held at St Vedast-alias-Foster, unless otherwise stated.



Spring Term Performance

Tuesday 10th March 2026, Temple Church

Rehearsal: 4.30pm - 6pm (tea provided)

Performance at 6pm

Cost?

Membership costs **£30 per term**.

If finances are a barrier, please get in touch as we may be able to offer you support.



Why Join?

Musical Development ◀

- Sing a wide range of choral music, from traditional to contemporary.
- Develop your musical and vocal skills through fun, high-quality rehearsals.

Cultural Opportunities ◀

- Perform in a range of churches and venues across the City of London, opening doors to some of the capital's most beautiful and historic buildings, including Temple Church.

Have fun! ◀

- Join a special musical team, make new friends, be inspired, and have fun!



Email yvette@templechurch.com to register interest
www.templechurch.com

