



Please scan the QR code below to help Prior Weston School and The Children's Centre raise much-needed funds.

It is free and easy to set up and use!

Raise funds for us for **FREE**

with  **easyfundraising**



Join as our supporter today at:

www.easyfundraising.org.uk/support-a-good-cause

Just search for:

Prior Weston School and Children's Centre

8,000+ retailers will donate to us whenever you shop with them



Plus, you'll get...



Exclusive retailer offers



Competitions



A warm feeling inside!

Over **£60m** raised for UK good causes

£0 extra cost to anyone



RUN KIDS RUN

ICG



**BROCKTON
EVERLAST INC.**

**DERWENT
LONDON**

RUN ISLINGTON RUN

**A RUNNING CHALLENGE FOR PRIMARY
SCHOOL CHILDREN AND THEIR FAMILIES**

28 June 2026

10AM-12PM

HIGHBURY FIELDS

**FUN, FITNESS & FUNDRAISING
FOR LOCAL SCHOOLS**

**WARM UPS . GAMES
MEDALS . SNACKS**

SCAN ME



www.runkidsrun.org





Music Masters KS2 after school Orchestra.

'The KS2 Music Masters orchestra meets after school on Tuesdays from 3:30 - 4:30pm.'

Orchestra is a great experience where the children get the opportunity to play with their class mates in a group setting.



As a member of the orchestra the children can expect to play lots of fun and challenging music together as well as improving their listening, social and musical skills.

If you would like your child to attend the after school music masters orchestra this term, please complete the form on parent mail to confirm their participation.

The Orchestra will have a 'sharing performance' for families on **Tuesday 30th June** at **3.30pm**, which will be the last orchestra session for this academic year'

Islington Schools Finance Service: Supermarket Vouchers Update

Change to support for FSM pupils in school holidays – and information on alternative help

Over the past five years, Islington Council has allocated a significant proportion of Household Support Fund (HSF) (a grant from the Department for Work and Pensions – DWP) to provide supermarket vouchers for pupils eligible for Free School Meals to help families meet the cost of food in the school holidays.

HSF has now ended and has been replaced, from 1 April 2026, by a new DWP grant called the Crisis and Resilience Fund (CRF). Whilst the CRF continues to include support for households facing a financial crisis, its focus shifts from providing blanket awards to help with the cost of living towards boosting support to help residents improve their longer-term financial position e.g. through help to claim benefits, tackle debt and move into employment.

We know the cost-of-living is still challenging for many households, we want to ensure you get the right support in your circumstances, if you are struggling with the cost of living there is other help available including:

- Holiday Activities and Food Fund (HAF) programme – providing activities and a healthy meal for children in the school holidays.
- CRF Crisis Payments – a one-off payment for residents who have experienced a financial shock – an event or change that has caused additional financial pressure
- Housing Payments – short term support for households impacted by welfare reforms, claiming Universal Credit or Housing Benefit to meet housing costs with a rent shortfall
- Employment support – help to find a job through our Islington Working (iWork) employment team, and free courses to help build skills for work through our Adult Community Learning service.
- Income Maximisation Team – to check you are claiming all your benefits
- Debt Advice through Citizen’s Advice Islington and other advice agencies.

We will continue to evolve our support services to provide the best possible support to households experiencing a financial shock, dealing with a crisis and helping them improve their financial situation.

Call: Contact Islington on 020 7527 8222
Email: heretohelp@islington.gov.uk

Islington Schools Finance Service:

Change to support for FSM pupils in school holidays – and information on alternative help

Information and support:

To find out more about our Holiday Activities and Food programme visit [Free holiday activities with lunch](#).

Call: Contact Islington on 020 7527 8222

Email: heretohelp@islington.gov.uk

Drop into one of our three Access Islington Hubs, where you can talk to a member of the team about your individual circumstances and get assistance with a range of support: Access Islington Hubs | Islington Council

- Central Hub: 222 Upper Street
- North Hub: 6-9 Manor Gardens

South Hub: Finsbury Library, 245 St John's Street

For further information, please contact Cost of Living Support Team on 020 7527 8222 or email heretohelp@islington.gov.uk

If you want further information on support around the cost of living: Scan the QR code or visit [Cost of living support](#) page.

Holiday Activities with Food



Islington's free Holiday Activities with Food (HAF) programme is back for the school summer holidays.

There are dozens of free activities available for eligible children and young people in Islington, with each one including a healthy lunch – from theatre camps and museum trips to kayaking, roller skating, cooking, football and much more.

Most activities are suitable for children aged 5 and over, although there are also some options available for Reception-aged children.

Please visit [Free holiday activities with lunch | Islington Council](#) to register now!

Bookings open from **Monday June 29th, 2026, at 6pm**. Children who are eligible for **benefits-related Free school meals** or have been **referred** by professionals will qualify for **FREE** places! For more information, please email HAF@islington.gov.uk.

Free Holiday Activity with Food explained by Islington Kids

Is your baby ready for solids?



Is your baby ready for solids?
Try our weaning quiz



Visit **Best Start in Life** for advice and support



Introducing solid foods is an important milestone in your baby's development, but it can sometimes feel overwhelming knowing when to begin, what to offer and how much to give. **Best Start in Life provides simple, trusted guidance** to help you start weaning safely and with confidence.

[Ready or not? Weaning quiz](#)

Visit Freightliners Farm this Summer



Looking for a free, family-friendly day out? **Freightliners Farm** is a lovely local space where children can see and learn about animals including goats, sheep, pigs and chickens. Families can drop in to explore the farm, gardens and outdoor spaces at weekends and during the summer holidays. Entry is free (donations welcome), making it a great option for a relaxed outing close to home.

Freightliners Farm

Islington Family Information Service now has a Whatsapp channel!

🔔 We've got exciting news!
Islington Family Information Service is now on WhatsApp 🌈

Stay up to date with:

- ✓ Local childcare and family services
- ✓ Parenting support and activities
- ✓ Funding and financial help updates
- ✓ Events happening near you
- 👉 Follow our WhatsApp Channel and never miss out



Scan the QR Code or click this link to join our
Whatsapp group

FREE!



Treasure Hunt

9-12 year olds learn tour guide skills to lead their families through an exciting trail uncovering beautiful art hidden across Union Chapel

Sat 20 Jun, 18 Jul, 8 Aug
near Highbury & Islington station

Free tickets at
bit.ly/ysfhunt



Led by the award-winning
Mrs H Sings
Co-designed with **Gideon Reeling**



Mrs H and the Singing Dwarf



Part of Sunday School Stories Project | Charity No 3210166 / Company No 02983881



Films for the Family - Sunday 24th June - Sunday 28th June 2026

Join us every Saturday & Sunday morning and on weekdays during the school holidays for some of our favourite family classics. For cinema lovers of all ages.

On Sundays the films are followed by free fun and creative activities for children. The screenings are Pay What You Can, which means you're free to pay as much or as little as you can afford.

We have an allocation of subsidised free tickets for each screening- please email info@thegardencinema.co.uk to enquire about booking a free ticket.

By paying for a ticket, you will enable us to keep offering Pay What You Can screenings to those who are struggling with the cost of living.

Suggested Prices:

I struggle to meet my basic needs: £0

I just about cover my basic needs: £3

I can cover my basic needs: £6

I comfortably meet my basic needs: £9

I have expendable income and financial security: £12

We sell bags of popcorn for £2. We kindly remind you that external snacks can not be brought into the cinema.

Have a childhood favourite you'd like screened at The Garden Cinema? You can propose a film in the Members' Area, after logging into your members' account.



How to Train Your Dragon (PG)

This film rolls fire-breathing action, epic adventure and big laughs into a captivating, fun and original story. Hiccup is a young... [Read More](#)

Dean DeBlois, 2010, USA, 98m.

Sat 27 Jun

11:00 PAY WHAT YOU CAN

Sun 28 Jun

11:00 PAY WHAT YOU CAN



Dr. Seuss' Horton Hears a Who! (U)

Based on the best-selling children's book by Dr Seuss and voiced by Jim Carrey and Steve Carell. A kindly elephant named... [Read More](#)

86m.

Sat 04 Jul

11:00 PAY WHAT YOU CAN

Sun 05 Jul

11:00 PAY WHAT YOU CAN

FLASH SALE!

£200 OFF ALL CAMPS

**Mon 2nd Feb
at 10:00am**

FunTech Camps @ Prior Weston School

27 July to 21 August

 Roblox Game Designer Age 7 to 10	 Minecraft Mod Developer Age 7 to 10	 Minecraft Redstone Engineer Age 9 to 12	 Minecraft Game Coder Age 10 to 12
 Roblox Lua Coder Age 11 to 16	 Python Coder Age 10 to 16	 Python OOP Age 11 to 16	 Java Coder Age 11 to 16
 Hackathon Cyber Security Age 12 to 16	 3D Game Design Developer Age 10 to 14	 Python Game Coder Age 12 to 16	 Unity Game Coder Age 11 to 16
 A.I. Machine Learning Age 12 to 16	 Lego Robotics Coder Age 7 to 10	 Camp Swap Plans may change? Unlimited changes, zero fees.	 ★ ★ ★ ★ ★ 13,000+ Reviews 97% Recommend Us!

Robotics **Roblox** **Minecraft** **Game Coders** **Core Coding Skills** **AI & Advanced Tech**

CHILD CARE VOUCHERS & TAX-FREE CHILD CARE ACCEPTED

Book now www.funtech.co.uk



TERM TIME | CAMPS | GCSES | A LEVELS | PRIVATE | BESPOKE





Fortune Street Park Friends



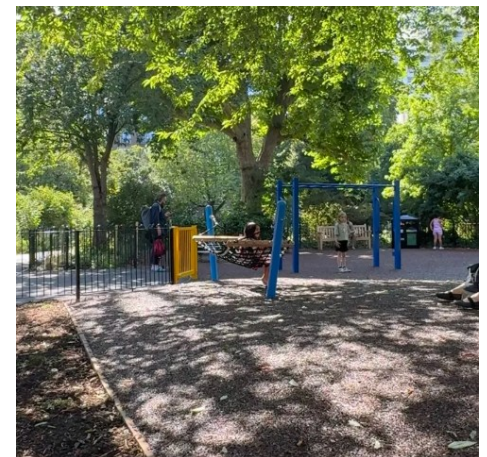
The **Friends of the Park** voluntary group established in 2005 consists of local City and Islington residents, who feel passionately about our local park.

Over the years they have fundraised and organised events in this small popular park. There is an annual community fun day that they organise and fundraise for – well attended by the local community and appreciated by all that come along.

They also care about the maintenance and security of the park, working in partnership with [Islington Greenspaces](#) . They also volunteer to lock the park in the evenings and at weekend safeguarding the park for all of us.

This is just a **friendly reminder** from The Friends of the Park to let everyone know that cycling in the park is **strictly not allowed**. It poses a risk to all park users, and there have been a few near misses involving bikes (both adult and child riders).

Please help us keep everyone safe by dismounting and encouraging your children to do the same before entering the park, reminding them of this rule.



SEND FAMILY SWIM PROGRAMME

CALLY POOL & GYM

Eight-week inclusive sessions for children aged 4 years and over with SEND and their families. Enjoy supported lessons, and free play with qualified teachers. Just £40 per family.

When: Saturdays

Time: 1.15pm - 2:15pm

Scan the QR code to find out more



Graphic Art and Print

PROOF - DO NOT PRINT



SOAP Box




DRAGON HALL TRUST

SOAPBOX AFTERSCHOOL CLUB!

Years 5 & 6 Only

Monday, Tuesday, Wednesday & Friday 3:45-5:30PM

69-85 Old Street, EC1V 9HX

MONDAY	TUESDAY WEDNESDAY	FRIDAY
		
<p>Young Women Only</p> <p>For Young Women Only. Covering diverse and creative activities in an intermixing setting of art, social skills, teamwork and cooking</p>	<p>Tuesday & Wednesday All Welcome</p> <p>All are welcome, with a focus on a weekly STEAM activity that blends creativity with learning new skills</p>	<p>Friday Drama Day!</p> <p>Step on stage and learn the craft of acting and delivering on stage, with Blaize from Make Believe & House Of Vox</p>

EMAIL EUGENIA@DRAGONHALL.ORG.UK OR CALL 07547 584831

ISLINGTON
For a more equal future



THE PEEL



Food Pop-ups

MONDAY-5.30PM PRET FOOD AT BRUNSWICK ESTATE, THE EMBERTON ROOM, GROUND FLOOR, EMBERTON COURT, TOMPION STREET, EC1V 0EP

TUESDAY-1PM SCOTTISH AND SAME DAY SURPLUS READY MEALS ONLY. AT THE PEEL, NORTHAMPTON ROAD, EC1R 0HU
(GET A TICKET & GRAB A COFFEE FROM 12.15PM)

WEDNESDAY-12PM FRESH FOOD AVAILABLE AT THE PEEL, NORTHAMPTON ROAD, EC1R 0HU
(GET A TICKET & GRAB A COFFEE FROM 11AM)

WEDNESDAY-5.30PM PRET FOOD AT FINSBURY ESTATE UNITY HALL, MICHAEL CLIFFE HOUSE, SKINNER STREET EC1R 0WW

PLEASE ARRIVE ON TIME TO AVOID DISAPPOINTMENT

FIS
Family Information Service



15 and 30 hours Free early learning and childcare

Take steps toward supporting your child's development!

- Social skills:** spending quality time with other children and adults
- Learning:** young children learn while they play and explore
- Routines:** children gain confidence, independence, and a sense of security

Free hours are available for 38 weeks a year, or some providers will allow you to 'stretch' the hours over more weeks, using fewer hours each week.

How many hours of childcare can you get a week?

Age 9 months+	Age 2 years+	Age 3 years+
Working families 30 hours	Working families 30 hours	Working families 30 hours
	Families receiving some additional forms of government support 15 hours	All families 15 hours

Sign up for updates at beststartinlife.gov.uk

Free hours are available from the start of the term after your child turns the relevant age by 31 March, 31 August, or 31 December.



What can you get?

Age 9 months-4 years

30 hours a week – for eligible working families*; both parents need to be working.

Speak to your local childcare providers to find out what they are offering
Apply at beststartinlife.gov.uk

* **Eligible working families** – Where each parent is employed, earning less than £100,000 per year, and earns at least the equivalent of the National Minimum or Living Wage for 16 hours a week.

2 years

Families receiving government support

15 hours a week – for families receiving benefits or on a low wage. Also, for children looked after, families with no recourse to public funds, children receiving DLA or with an EHCP. Apply at islington.gov.uk/free2

Age 3-4

15 hours a week - for everyone; no need to apply.
Contact early years providers to ask about a place.

Tax-Free Childcare, Universal Credit

Eligible families may be entitled to Tax-Free Childcare or Universal Credit to support with childcare costs.

Any questions?

Contact Islington Family Information Service (FIS)

020 7527 5959

fis@islington.gov.uk

Follow us on Facebook

[@IslingtonFIS](https://www.facebook.com/IslingtonFIS)

30 hours application deadline

My child turns the relevant age between	I can access my funded hours from	Application deadline
1 January to 31 March	Term starting on or after 1 April	31 March
1 April to 31 August	Term starting on or after 1 September	31 August
1 September to 31 December	Term starting on or after 1 January	31 December



Early Help Attendance Mentors

FAQs

What are the main responsibilities of the Attendance Mentors?

- **1:1 sessions** with children/young people – primarily in school, occasionally at home and/or community.
- **Identify and address** the underlying reasons for declining attendance.
- **Create and provide tailored support plans**, including help with routines and strategies to rebuild confidence in attending school.
- **Collaborate** with school and families to ensure support can be put in place.

How long will the intervention last?

- Each individual **intervention will run for up to 8 weeks.**

Who is eligible for the Attendance Mentors Programme?

- Children/young people with **attendance between 80–90%**, where attendance is the primary concern.
- Children/young people who **are not currently open to Children's Social Care or Early Help family support.**
- Children/young people who are **keen to work alongside a mentor to improve** their attendance.

The Early Help Attendance Mentors Programme is an **8-week initiative** designed to help children/young people whose school attendance has dropped to between 80–90%. **Our goal is to boost their attendance** and help them get back on track through focused, short-term support.

Is this something your child would benefit from?
Speak to a staff member at your child's school who can assist you with a referral.

Please note: Each referral will be considered for suitability for the programme.



Bright Futures Islington

Would you like to be a Parent Champion?

Do you want to help families live healthier lives while building your skills and making new friends?

Join us as a Families for Life Champion!

We're looking for enthusiastic parent or carer volunteers to help promote healthy lifestyles in schools and communities. Whether it's chatting at the school gate, running fun workshops, or sharing events on WhatsApp - you can make a real difference!

What you'll do:

- Spread the word about health programmes like Family Kitchen and Taste Education
- Support school gate activities (flu jabs, oral health, parent surveys)
- Run parent workshops on healthy snacks, lunches, and breakfasts
- Share info through your networks and help families thrive

What you'll get:

- ◆ Free training & certificates
- ◆ Travel reimbursements
- ◆ Boost your CV & explore paid opportunities
- ◆ Build friendships & community connections
- ◆ Learn more about local services and healthy living

Flexible commitment: Just **one** activity per half term, with full support and training provided.

Ready to get involved?

Just fill out this short application (<https://forms.office.com/r/8paXEmFvBS>) by scanning the QR Code above.

Don't hesitate to email margherita.locatelli@islington.gov.uk for more information!

Families for Life Community
Champion Application Form - 2025



Introducing St Luke's Community Shop & Cafe

Our food hub is changing to a more sustainable and empowering food and support service for households in St Luke's area of benefit on a low income.



Our Community Shop and Café combine to help residents towards stability and independence - members can choose a basket of food for a £5 contribution to top up their weekly shop and get information, advice and support on St Luke's services and other local agencies for longer-term support.



St Luke's Community Shop and Café will open every Wednesday from September. It's an easy, low-cost way to boost regular shopping. For more information about registering, email info@slpt.org.uk or pop into our reception for a Community Shop form.

Supported by



St Luke's Community Centre, 90 Central St, London EC1V 8AJ

✉ info@slpt.org.uk ☎ 020 7549 8181



@StLukesTrust

Charity Number 207497





Free Vegan Pasties



Waitrose has very kindly donated quite a few frozen Vegan pasties to the school and we are offering some to any families that would like them.

Please let Reception or Premises team know you are interested and they will sort them out for you.

