

BABY AND CHILDREN'S CLOTHES, BOOKS AND TOYS SWAP

St Luke's & The Peel

FRIDAY 17TH JULY 2026

at St Luke's Community Centre

11 A M - 1 P M

If you are in need of pre-loved baby/children's clothes, toys and books, come to our swap event for items for ages 0-8 years!

ACCEPTING DONATIONS, PLEASE DROP THEM OFF AT RECEPTION!

90 CENTRAL ST, SOUTH ISLINGTON, EC1V 8AJ

St Luke's Community Centre, 90 Central Street, London EC1V 8AJ

✉ info@splt.org.uk ☎ 020 7549 8181

📷 📺 📱 📧 @StLukesTrust Charity Number 287497

ST LUKE'S
COMMUNITY
CENTRE

THE
Peel



Arsenal in the Community are running a free Year 5 Summer Camp!

The camp will run every day between **9.30am and 12.30pm** from **Monday 20th July to Friday 24th July** at The Arsenal Hub, which is located by the Emirates Stadium.

It is not just a football camp; half the time is spent on wellbeing workshops and activities to help them prepare for Year 6.

If you would like your child to attend please complete the [Double Club Consent Form](#). We will then contact you directly on the email addresses provided.

There are limited spaces so **please only sign up if your child will be attending the camp.**

This camp is only for Year 5 pupils.

Thanks in advance and we hope to see you at the Hub!

Best wishes,

The Primary Schools Team



Prior Weston

Summer Concert

TUESDAY 7TH JULY 2026

Music Masters and Prior Weston Primary school would like to celebrate the hard work and achievements of all the young violinists and cellists from Year 1, Year 2 and KS2 participants and invite you to watch our Summer Concert 2026



PLAISTERERS' HALL, 1 LONDON WALL,
BARBICAN EC2Y 5JU
DOORS OPEN 13:45PM/PERFORMANCE 2.00PM
PLEASE RESPOND TO PARENTMAIL FORM OR SPEAK TO BEV IN
THE FOYER BY
THURSDAY 2ND JULY



Islington Schools Finance Service: Supermarket Vouchers Update

Change to support for FSM pupils in school holidays – and information on alternative help

Over the past five years, Islington Council has allocated a significant proportion of Household Support Fund (HSF) (a grant from the Department for Work and Pensions – DWP) to provide supermarket vouchers for pupils eligible for Free School Meals to help families meet the cost of food in the school holidays.

HSF has now ended and has been replaced, from 1 April 2026, by a new DWP grant called the Crisis and Resilience Fund (CRF). Whilst the CRF continues to include support for households facing a financial crisis, its focus shifts from providing blanket awards to help with the cost of living towards boosting support to help residents improve their longer-term financial position e.g. through help to claim benefits, tackle debt and move into employment.

We know the cost-of-living is still challenging for many households, we want to ensure you get the right support in your circumstances, if you are struggling with the cost of living there is other help available including:

- Holiday Activities and Food Fund (HAF) programme – providing activities and a healthy meal for children in the school holidays.
- CRF Crisis Payments – a one-off payment for residents who have experienced a financial shock – an event or change that has caused additional financial pressure
- Housing Payments – short term support for households impacted by welfare reforms, claiming Universal Credit or Housing Benefit to meet housing costs with a rent shortfall
- Employment support – help to find a job through our Islington Working (iWork) employment team, and free courses to help build skills for work through our Adult Community Learning service.
- Income Maximisation Team – to check you are claiming all your benefits
- Debt Advice through Citizen's Advice Islington and other advice agencies.

We will continue to evolve our support services to provide the best possible support to households experiencing a financial shock, dealing with a crisis and helping them improve their financial situation.

Call: Contact Islington on 020 7527 8222
Email: heretohelp@islington.gov.uk

Islington Schools Finance Service:

Change to support for FSM pupils in school holidays – and information on alternative help

Information and support:

To find out more about our Holiday Activities and Food programme visit [Free holiday activities with lunch](#).

Call: Contact Islington on 020 7527 8222

Email: heretohelp@islington.gov.uk

Drop into one of our three Access Islington Hubs, where you can talk to a member of the team about your individual circumstances and get assistance with a range of support: Access Islington Hubs | Islington Council

- Central Hub: 222 Upper Street
- North Hub: 6-9 Manor Gardens

South Hub: Finsbury Library, 245 St John's Street

For further information, please contact Cost of Living Support Team on 020 7527 8222 or email heretohelp@islington.gov.uk

If you want further information on support around the cost of living: Scan the QR code or visit [Cost of living support](#) page.



Please scan the QR code below to help Prior Weston School and The Children's Centre raise much-needed funds.

It is free and easy to set up and use!

Raise funds for us for **FREE**

with  **easyfundraising**



Join as our supporter today at:

www.easyfundraising.org.uk/support-a-good-cause

Just search for:

Prior Weston School and Children's Centre

8,000+ retailers will donate to us whenever you shop with them



JOHN LEWIS



Plus, you'll get...



Exclusive retailer offers



Competitions



A warm feeling inside!

Over **£60m** raised for UK good causes

£0 extra cost to anyone





Music Masters KS2 after school Orchestra.

'The KS2 Music Masters orchestra meets after school on Tuesdays from 3:30 - 4:30pm.'

Orchestra is a great experience where the children get the opportunity to play with their class mates in a group setting.

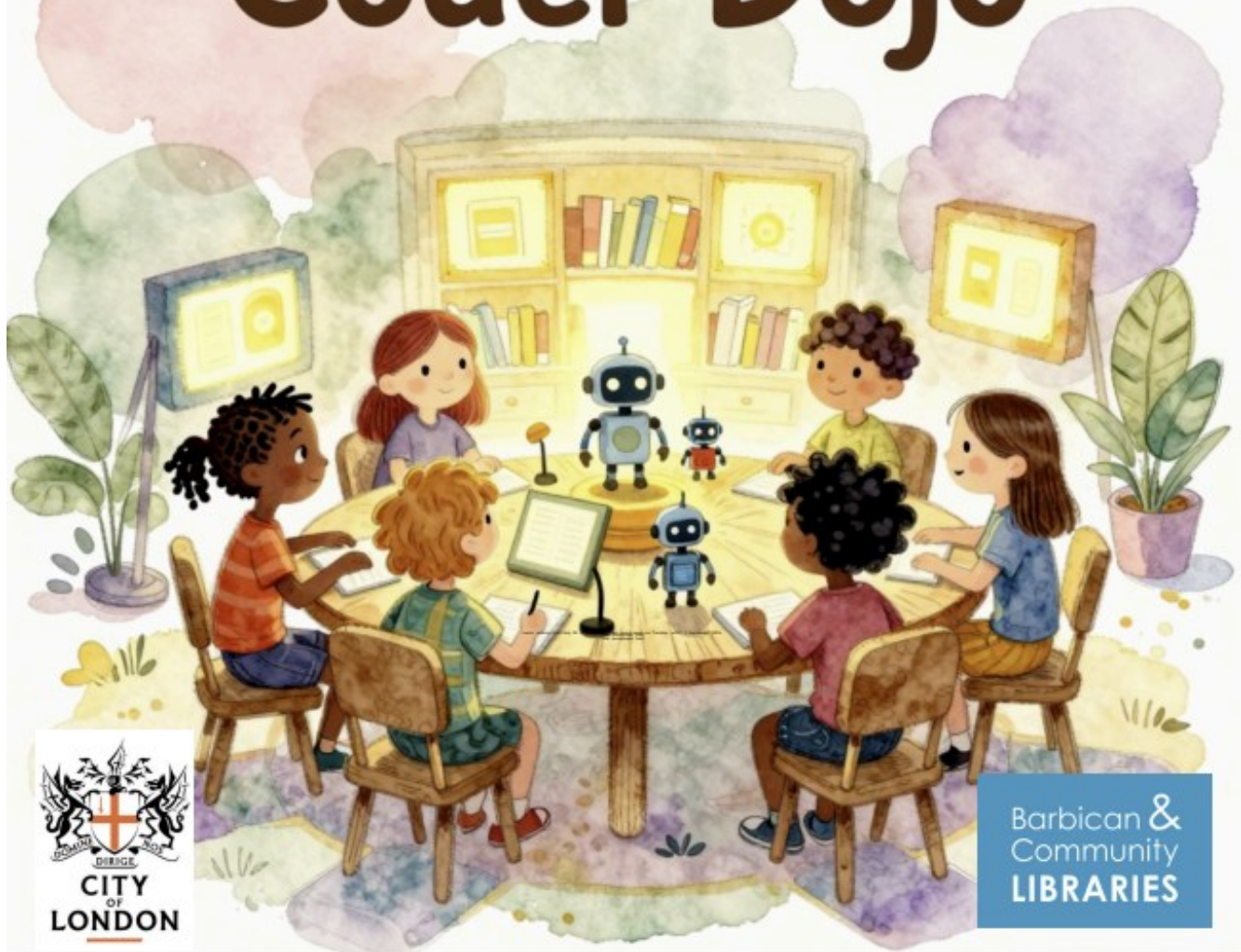


As a member of the orchestra the children can expect to play lots of fun and challenging music together as well as improving their listening, social and musical skills.

If you would like your child to attend the after school music masters orchestra this term, please complete the form on parent mail to confirm their participation.


The Orchestra will have a 'sharing performance' for families on **Tuesday 30th June** at **3.30pm**, which will be the last orchestra session for this academic year'


Coder Dojo




Barbican &
Community
LIBRARIES

Learn coding starting 30 June,
6-7pm, then every week on
Tuesday until 1 September 2026.

 For young coders (ages 9-16)

 Barbican Children's Library

 forms.gle/k5jb3haEo2oLQV1F7



Hello from Finsbury Library

On Saturday 4th July we will be launching this year's Summer Reading Challenge, 'Read to the Beat' at the library.



The theme celebrates the joy of music and the power it has to move, inspire and connect us all through the magic of reading.

Please come along and join us!

Holiday Activities with Food



Islington's free Holiday Activities with Food (HAF) programme is back for the school summer holidays.

There are dozens of free activities available for eligible children and young people in Islington, with each one including a healthy lunch – from theatre camps and museum trips to kayaking, roller skating, cooking, football and much more.

Most activities are suitable for children aged 5 and over, although there are also some options available for Reception-aged children.

Please visit [Free holiday activities with lunch | Islington Council](#) to register now!

Bookings open from **Monday June 29th, 2026, at 6pm**. Children who are eligible for **benefits-related Free school meals** or have been **referred** by professionals will qualify for **FREE** places! For more information, please email HAF@islington.gov.uk.

Free Holiday Activity with Food explained by Islington Kids

Is your baby ready for solids?



Is your baby ready for solids?
Try our weaning quiz



Visit **Best Start in Life** for advice and support



Introducing solid foods is an important milestone in your baby's development, but it can sometimes feel overwhelming knowing when to begin, what to offer and how much to give. **Best Start in Life provides simple, trusted guidance** to help you start weaning safely and with confidence.

[Ready or not? Weaning quiz](#)

Visit Freightliners Farm this Summer



Looking for a free, family-friendly day out? **Freightliners Farm** is a lovely local space where children can see and learn about animals including goats, sheep, pigs and chickens. Families can drop in to explore the farm, gardens and outdoor spaces at weekends and during the summer holidays. Entry is free (donations welcome), making it a great option for a relaxed outing close to home.

Freightliners Farm

Islington Family Information Service now has a Whatsapp channel!

🔔 We've got exciting news!

Islington Family Information Service is now on WhatsApp 🌈

Stay up to date with:

- ✓ Local childcare and family services
- ✓ Parenting support and activities
- ✓ Funding and financial help updates
- ✓ Events happening near you
- 👉 Follow our WhatsApp Channel and never miss out



Scan the QR Code or click this link to join our
Whatsapp group

FREE!



Treasure Hunt

9-12 year olds learn tour guide skills to lead their families through an exciting trail uncovering beautiful art hidden across Union Chapel

Sat 20 Jun, 18 Jul, 8 Aug
near Highbury & Islington station

Free tickets at
bit.ly/ysfhunt



Led by the award-winning
Mrs H Sings
Co-designed with **Gideon Reeling**



Part of Sunday School Stones Project | Charity No 3210166 / Company No 02983881



Films for the Family - Sunday 24th June - Sunday 28th June 2026

Join us every Saturday & Sunday morning and on weekdays during the school holidays for some of our favourite family classics. For cinema lovers of all ages.

On Sundays the films are followed by free fun and creative activities for children. The screenings are Pay What You Can, which means you're free to pay as much or as little as you can afford.

We have an allocation of subsidised free tickets for each screening- please email info@thegardencinema.co.uk to enquire about booking a free ticket.

By paying for a ticket, you will enable us to keep offering Pay What You Can screenings to those who are struggling with the cost of living.

Suggested Prices:

I struggle to meet my basic needs: £0

I just about cover my basic needs: £3

I can cover my basic needs: £6

I comfortably meet my basic needs: £9

I have expendable income and financial security: £12

We sell bags of popcorn for £2. We kindly remind you that external snacks can not be brought into the cinema.

Have a childhood favourite you'd like screened at The Garden Cinema? You can propose a film in the Members' Area, after logging into your members' account.



How to Train Your Dragon (PG)

This film rolls fire-breathing action, epic adventure and big laughs into a captivating, fun and original story. Hiccup is a young... [Read More](#)

Dean DeBlois, 2010, USA, 98m.

Sat 27 Jun

11:00 PAY WHAT YOU CAN

Sun 28 Jun

11:00 PAY WHAT YOU CAN



Dr. Seuss' Horton Hears a Who! (U)

Based on the best-selling children's book by Dr Seuss and voiced by Jim Carrey and Steve Carell. A kindly elephant named... [Read More](#)

86m.

Sat 04 Jul

11:00 PAY WHAT YOU CAN

Sun 05 Jul

11:00 PAY WHAT YOU CAN

27 July to 21 August 2026



Lego Robotics
Coder

Age 7 to 10



Lego Robotics
Robot Wars

Age 11 to 14



Roblox
Game Designer

Age 7 to 10



Roblox
Lua Coder

Age 11 to 16



Minecraft
Mod Developer

Age 7 to 10



Python
Coder

Age 10 to 16



3D Game Design
Developer

Age 10 to 14



Hackathon
Cyber Security

Age 12 to 16



Minecraft
Redstone Engineer

Age 9 to 12



Python
OOP

Age 11 to 16



Unity
Game Coder

Age 11 to 16



A.I.
Machine Learning

Age 12 to 16



Minecraft
Game Coder

Age 10 to 12



Java
Coder

Age 11 to 16



Python
Game Coder

Age 12 to 16



A.I.
Vibe Coder

Age 13 to 16

NEW

Robotics

Roblox

Minecraft

Game Coders

Core Coding Skills

AI & Advanced Tech

30 YEARS' EXPERIENCE TEACHING CHILDREN CODING & TECH

Book now www.funtech.co.uk

FunTech®

Camp Formats

In-Person – Max 8 per tutor

Online – Max 6 per tutor

On Location

In-Person Taught by a tutor in the classroom

FlexiFive Taught live by a subject specialist tutor online + tutor in-classroom

Residential Taught by a tutor in the classroom + dedicated pastoral team

EARLY DROP-OFF, LATE PICK-UP & LAPTOP HIRE AVAILABLE

Live Online

Taught live by a subject specialist tutor online

Supported by our dedicated Student Success Team (SST)

FULL DAY | MORNINGS | AFTERNOONS

FlexiHybrid (Mix of both)

Taught live by a subject specialist tutor online

Supported by our Student Success Team (SST) online

When attending in person, your child is also supported by an in-classroom tutor

SWITCH BETWEEN HOME OR ATTENDING IN PERSON

REAL FUN | REAL SKILLS | REAL OUTCOMES

Book now www.funtech.co.uk

FunTech

Coding & Tech Camps

@ Prior Weston School

£100 OFF

Code: **26BAR100**



Distinctly **Different** | Quietly **Brilliant** | Unmistakably **Exceptional**

FunTech

Book now www.funtech.co.uk

CHILD CARE VOUCHERS & TAX-FREE CHILD CARE ACCEPTED

Mimi and Friends' Big Earth Adventure

Free Family Summer Science Exhibition



Join the Institute of Physics for a summer of science fun! Activities and events ideal for families with children aged 5-11.

Plan your adventure
iop.org/big-earth-adventure

#MimiEarthAdventure

Open Weekdays

JUL 22 to AUG 28

10.00 - 16.00

Let's Go On A Global Adventure!

What's the difference between a volcano and a mountain? Why do earthquakes happen? What kind of weather comes from space? Let's go on a planet-wide adventure and find out!

This summer, the Institute of Physics invites you and your family on an adventure to explore the science of our amazing planet.

Get hands-on with experiments and challenges, meet inspiring scientists and be creative with arts and crafts activities.

Coming this summer, perfect for families with children aged 5-11.



Plan Your Visit!

Open weekdays, 10.00 - 16.00 from 22 July until 28 August.

Institute of Physics,
37 Caledonian Road, N1 9BU.

A 5-minute walk from King's Cross St Pancras station.

Find out more at
iop.org/big-earth-adventure



IOP Institute of Physics





Fortune Street Park Friends



The **Friends of the Park** voluntary group established in 2005 consists of local City and Islington residents, who feel passionately about our local park.

Over the years they have fundraised and organised events in this small popular park. There is an annual community fun day that they organise and fundraise for – well attended by the local community and appreciated by all that come along.

They also care about the maintenance and security of the park, working in partnership with [Islington Greenspaces](#) . They also volunteer to lock the park in the evenings and at weekend safeguarding the park for all of us.

This is just a **friendly reminder** from The Friends of the Park to let everyone know that cycling in the park is **strictly not allowed**. It poses a risk to all park users, and there have been a few near misses involving bikes (both adult and child riders).

Please help us keep everyone safe by dismounting and encouraging your children to do the same before entering the park, reminding them of this rule.



SEND FAMILY SWIM PROGRAMME

CALLY POOL & GYM

Eight-week inclusive sessions for children aged 4 years and over with SEND and their families. Enjoy supported lessons, and free play with qualified teachers. Just £40 per family.

When: Saturdays

Time: 1.15pm - 2:15pm

Scan the QR code to find out more



Graphic Art and Print

PROOF - DO NOT PRINT



SOAP Box




DRAGON HALL TRUST

SOAPBOX AFTERSCHOOL CLUB!

Years 5 & 6 Only

Monday, Tuesday, Wednesday & Friday 3:45-5:30PM

69-85 Old Street, EC1V 9HX

MONDAY	TUESDAY WEDNESDAY	FRIDAY
		
<p>Young Women Only</p> <p>For Young Women Only. Covering diverse and creative activities in an intermixing setting of art, social skills, teamwork and cooking</p>	<p>Tuesday & Wednesday All Welcome</p> <p>All are welcome, with a focus on a weekly STEAM activity that blends creativity with learning new skills</p>	<p>Friday Drama Day!</p> <p>Step on stage and learn the craft of acting and delivering on stage, with Blaize from Make Believe & House Of Vox</p>

EMAIL EUGENIA@DRAGONHALL.ORG.UK OR CALL 07547 584831

ISLINGTON
For a more equal future

FIS
Family Information Service



15 and 30 hours Free early learning and childcare

Take steps toward supporting your child's development!

Social skills: spending quality time with other children and adults

Learning: young children learn while they play and explore

Routines: children gain confidence, independence, and a sense of security

Free hours are available for 38 weeks a year, or some providers will allow you to 'stretch' the hours over more weeks, using fewer hours each week.

How many hours of childcare can you get a week?

Age 9 months+

Working families

30 hours

Age 2 years+

Working families

30 hours

Age 3 years+

Working families

30 hours



Sign up for updates at
beststartinlife.gov.uk

Families receiving
some additional forms
of government support

15 hours

All families

15 hours

Free hours are available from the start of the term after your child turns the relevant age by 31 March, 31 August, or 31 December.



What can you get?

Age 9 months-4 years

30 hours a week – for eligible working families*; both parents need to be working.

Speak to your local childcare providers to find out what they are offering
Apply at beststartinlife.gov.uk

* Eligible working families – Where each parent is employed, earning less than £100,000 per year, and earns at least the equivalent of the National Minimum or Living Wage for 16 hours a week.

2 years

Families receiving government support

15 hours a week – for families receiving benefits or on a low wage. Also, for children looked after, families with no recourse to public funds, children receiving DLA or with an EHCP. Apply at islington.gov.uk/free2

Age 3-4

15 hours a week - for everyone; no need to apply.
Contact early years providers to ask about a place.

Tax-Free Childcare, Universal Credit

Eligible families may be entitled to Tax-Free Childcare or Universal Credit to support with childcare costs.

Any questions?

Contact Islington Family Information Service (FIS)

020 7527 5959

fis@islington.gov.uk

Follow us on Facebook

[@IslingtonFIS](https://www.facebook.com/IslingtonFIS)

30 hours application deadline

My child turns the relevant age between	I can access my funded hours from	Application deadline
1 January to 31 March	Term starting on or after 1 April	31 March
1 April to 31 August	Term starting on or after 1 September	31 August
1 September to 31 December	Term starting on or after 1 January	31 December



Early Help Attendance Mentors

FAQs

What are the main responsibilities of the Attendance Mentors?

- **1:1 sessions** with children/young people – primarily in school, occasionally at home and/or community.
- **Identify and address** the underlying reasons for declining attendance.
- **Create and provide tailored support plans**, including help with routines and strategies to rebuild confidence in attending school.
- **Collaborate** with school and families to ensure support can be put in place.

How long will the intervention last?

- Each individual **intervention will run for up to 8 weeks.**

Who is eligible for the Attendance Mentors Programme?

- Children/young people with **attendance between 80–90%**, where attendance is the primary concern.
- Children/young people who **are not currently open to Children's Social Care or Early Help family support.**
- Children/young people who are **keen to work alongside a mentor to improve** their attendance.

The Early Help Attendance Mentors Programme is an **8-week initiative** designed to help children/young people whose school attendance has dropped to between 80–90%. **Our goal is to boost their attendance** and help them get back on track through focused, short-term support.

Is this something your child would benefit from?
Speak to a staff member at your child's school who can assist you with a referral.

Please note: Each referral will be considered for suitability for the programme.





Incredible Years Parenting Groups

14-week course for parents of children aged 1-3 and 3 - 6years.

- Would you like to share and learn new parenting skills?
- Do you want to be a more confident and happier parent?
- Would you like to learn more about how you can support your child's development?

Increase your confidence in parenting your children and learn new skills in a relaxed and friendly environment

Creche will also be available for this group.

Parents are required to meet facilitators for an assessment before being offered a place in the group.

To register interest, please scan the QR code



Tuesdays

(1 - 3 Year olds)

29 September 2026 - 19 January 2027

(Term-time only)

Best Start Family Hub Central at
New River Green Children's Centre
N1 2SX

9:30AM - 12:00PM

Fridays

(3 - 6 Year Olds)

2 October 2026 - 22 January 2027

(Term-time only)

Ambler Children's Centre
N4 2QX

