



ISLINGTON

# Secondary Transfer 2020/21

For children born between  
1 September 2008 and 31 August 2009

- Islington School Admissions





## Getting information – before you apply for a school place

- Read the ‘Secondary Transfer’ brochure at [www.islington.gov.uk/admissions](http://www.islington.gov.uk/admissions)
- Visit schools. Open Days are listed in the brochure.
- Look at other sources of information (E.g. School performance tables, Ofsted Reports)
- Consider how likely your child is to be offered the schools you most want by looking at the criteria. If you need help in working this out, contact the School Admissions Team





## Completing your application

- Apply online at [www.islington.gov.uk/admissions](http://www.islington.gov.uk/admissions)
- Use all six preferences
- If you live in Islington, you need to apply using Islington's online application form. If you live outside Islington, you need to apply using your Council's application form.
- Complete a supplementary information form, if required (Check the school's fact file)
- **DEADLINE: 31 OCTOBER 2019**  
(Recommended date : 18th October 2019)





## Important facts

- Schools **DO NOT** know where you list them on the form
- Do not list any private schools
- Live in Islington? Put all schools (regardless of L.A) on the application.

### Listing:

- a school first
- just one type of school (such as a single sex school) or
- just one school

does not mean that your application will be looked at more favourably

- After **31 October** you will not be able to change your preferences or order of preferences. If you apply online you can make changes right up until midnight on this day



## Processing your form

- Each of your 6 preferences is looked at against the rules for the school
- If more than one school can offer your child a place, we will look to see where you listed those schools on your form
- We will then offer you the school listed highest on your application form.
- This is why you **MUST** list the schools in the order you most want them
- For Islington residents, if we cannot offer any school listed on your form, then we will offer the nearest Islington community school with an available place



# Admission Rules for Community Schools

*Children with an Educational Health and Care Plan which names the school will be offered a place through the SEN process*

Order for admission:

- 1) **Looked after children or previously looked after children**
- 2) **Siblings**
- 3) **Social/Medical**
- 4) **Distance (Straight line measurement)**



# Admission Rules for Voluntary Aided schools and Academies

- Voluntary Aided Schools, Free Schools and Academies have their own admission rules
- Some of these schools may require a supplementary form to be completed (check the school's fact file)
- You will therefore need to look carefully at the rules for those individual schools



## Offer day – 2 March 2020

- An email will be sent allowing you to access your eAdmissions account
- You can view your offer online (from 2 March in the evening) and accept immediately
- If you have any questions about your result, please contact us – we're here to help

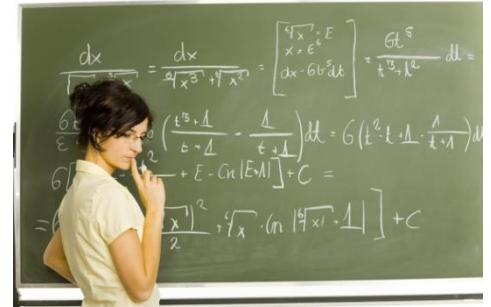






## What happens next

- Accept the school place your child has been offered
- Your child's name will be automatically added to the waiting list for any schools you have listed higher on your form
- We will contact you if we can offer your child a higher preference school
- You have a right of appeal
- We can send you a list of schools in Islington with available places
- Tell us if your circumstances have changed





# Summary



- Carry out your research
- Complete your form online by **31 October 2019**
- Use all six preferences and do include your nearest school
- Offer day is **2 March 2020**
- **The Islington School Admissions Team is here to help you**

# School that past students have attended in the last 2 years

Central Foundation Boys' School

Elizabeth Garrett Anderson School

Haggerston School

City of London Academy, Highbury Grove (COLAHG)

City of London Academy, Islington (COLAI) City of London Academy, Shoreditch

Arts and Media School, Islington

Colchester Academy

Grey Coat Hospital

Holland Park School

Holloway School

Please check with the school for their open days and arrangements.



ISLINGTON

# Thank you

Islington School Admissions Team

020 7527 5515

[www.islington.gov.uk/admissions](http://www.islington.gov.uk/admissions)

Email: [admissions@islington.gov.uk](mailto:admissions@islington.gov.uk)